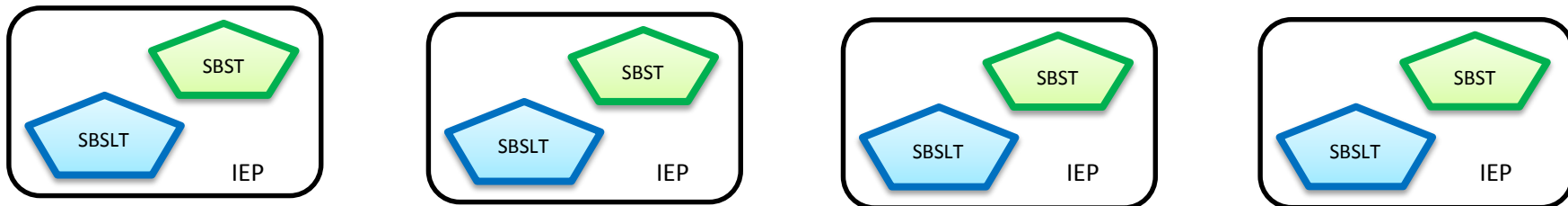
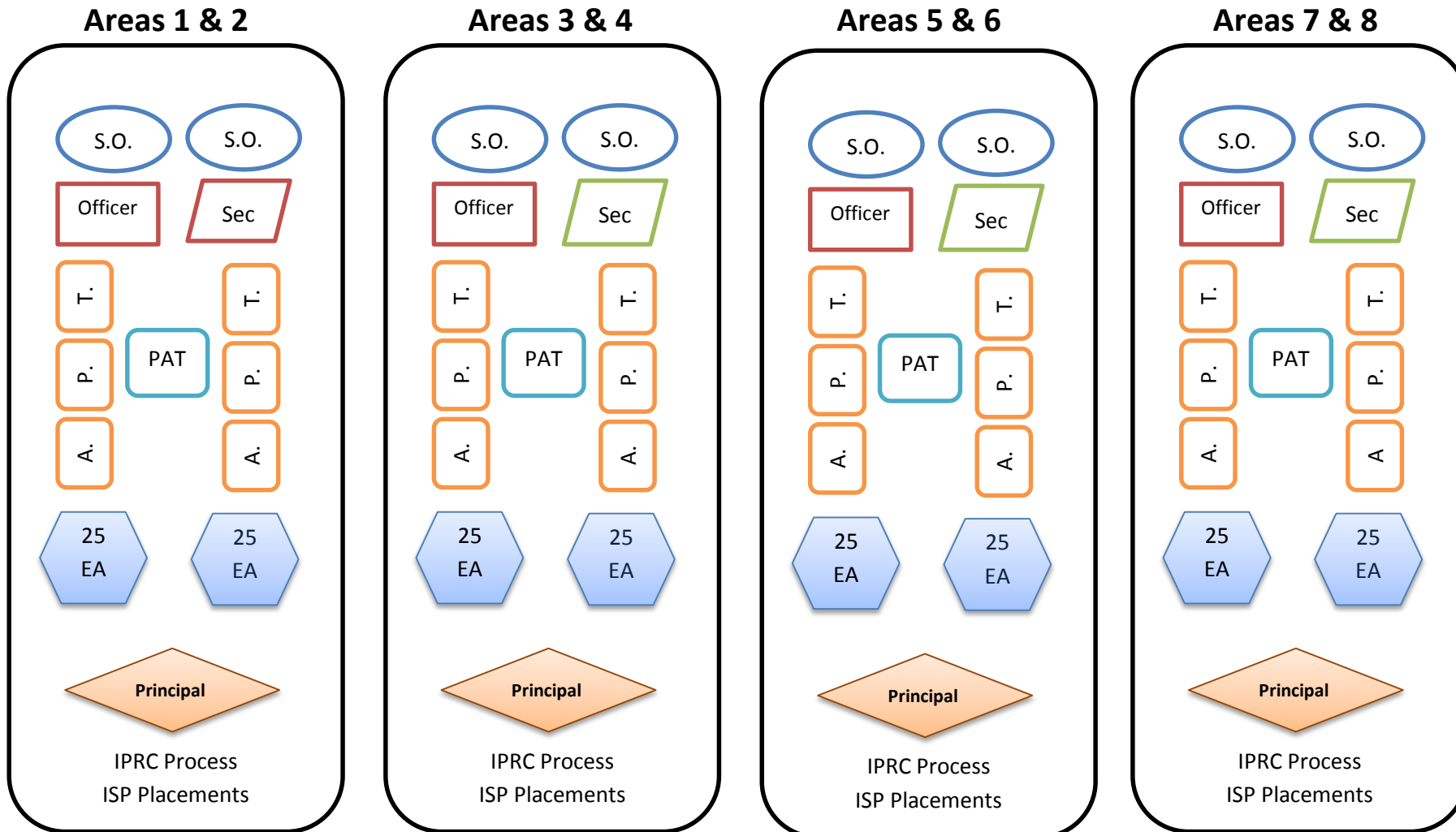


Special Education Organizational Framework for 2015-16

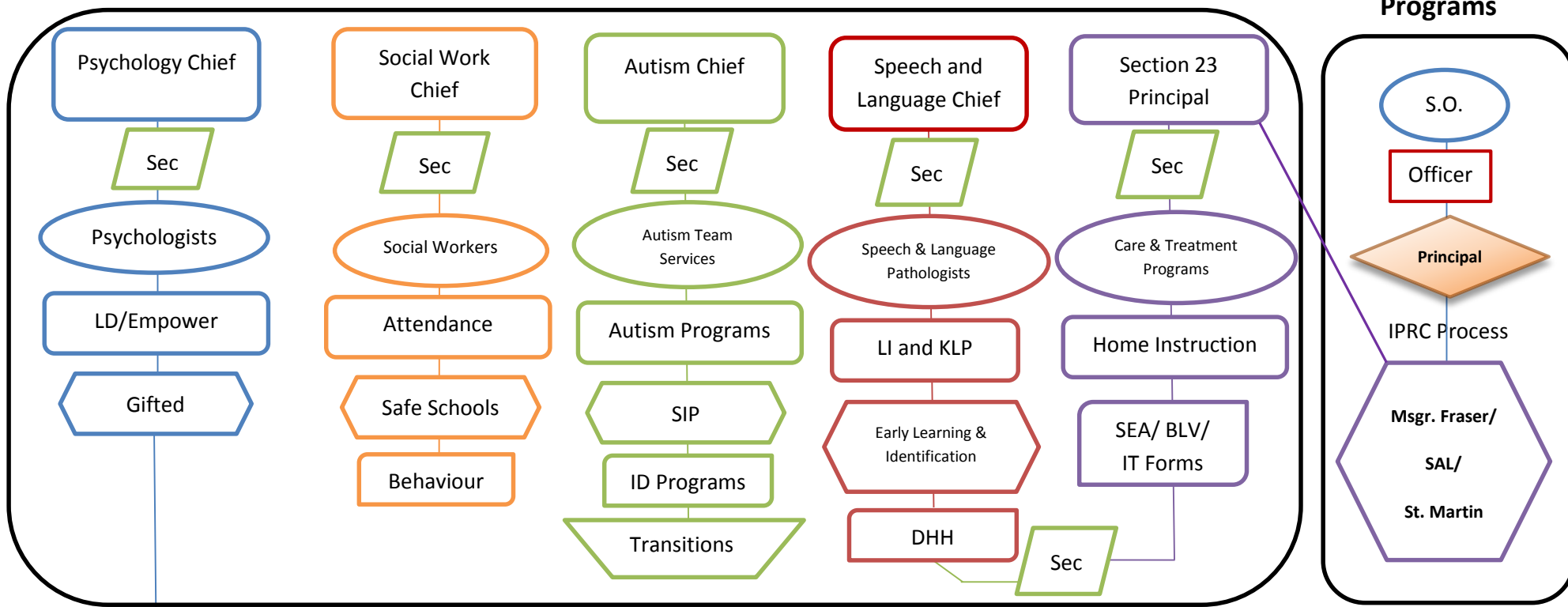
School Based Local Supports



Regional/Field Operations



Centrally Located Supports



Alternative Programs

Mental Health Strategy

Special Education Administrative Officer

Special Education Superintendent

- A.P.T. - Assessment and Programming Teacher
- BLV- Blind and Low Vision
- DHH- Deaf and Hard of Hearing
- EA - Educational Assistant
- ID- Intellectual Disability
- IEP- Individual Education Plan
- IPRC- Identification, Placement and Review Committee
- ISP - Intensive Support Program
- IT - Information Technology
- LD - Learning Disability
- LI- Language Impairment

- KLP- Kindergarten Language Program
- SAL- Supervised Alternative Learning
- SBST- School Based Support Team
- SBSLT- School Based Support Learning Team (includes central members)
- SEA- Special Equipment Amount
- SEC - Secretary
- SIP- Special Incidence Portion
- S.O. - Supervisory Officer
- PAT- Programming and Assessment Teacher (Secondary)