



REPORT TO

STUDENT ACHIEVEMENT AND WELL BEING, CATHOLIC EDUCATION AND HUMAN RESOURCES COMMITTEE

ATTENDANCE BOUNDARY REVIEW – ST. GREGORY, NATIVITY OF OUR LORD, MOTHER CABRINI, ST. MARCELLUS, OUR LADY OF SORROWS – INTERIM REPORT (TRUSTEE WARDS 1 AND 2)

“Eager to maintain the unity of the Spirit in the bond of peace.”, Ephesians 4:3

Created, Draft	First Tabling	Review
January 16, 2017	March 2, 2017	Click here to enter a date.
J. Peake, Senior Manager of Planning and Assessment J. Volek, Sr. Coordinator, Planning, Assessment, Admissions and Accountability M. Silva, Comptroller of Planning and Development Services D. Yack, Superintendent Student Achievement and Well-Being, Area 2 M. Puccetti, Superintendent of Facilities		
RECOMMENDATION REPORT		

Vision:

At Toronto Catholic we transform the world through witness, faith, innovation and action.

Mission:

The Toronto Catholic District School Board is an inclusive learning community uniting home, parish and school and rooted in the love of Christ.

We educate students to grow in grace and knowledge to lead lives of faith, hope and charity.



R. McGuckin

Associate Director of Academic Affairs

A. Sangiorgio

Associate Director of Planning and Facilities

C. Jackson

Executive Superintendent of Business Services and Chief Financial Officer

Angela Gauthier

Director of Education

A. EXECUTIVE SUMMARY

At its Corporate Affairs, Strategic Planning and Property Committee meeting held on January 21, 2016, the Board considered the report 'Elementary Boundary Review Ranking – All Wards, and approved the initiation of a boundary review for St. Gregory, Nativity of Our Lord, Mother Cabrini, St. Marcellus, in accordance with Board Policy *Elementary School Attendance Boundary Review S.A.03*.

Subsequently, at its meeting of February 9, 2016, the Board approved limited representation from Our Lady of Sorrows for the purpose of reviewing the shared attendance boundary between St. Gregory and Our Lady of Sorrows.

An Interim report was submitted to the January 26, 2017 Regular Board meeting and recommended that the following be considered for approval at the meeting of the Board of Trustees on February 23, 2017:

1. *The attendance boundaries for St. Gregory, Nativity of Our Lord, Mother Cabrini, St. Marcellus and Our Lady of Sorrows remain status quo (unchanged).*
2. *That, in accordance with the Long-Term Accommodation Program Plan (LTAPP), staff investigate and assess possible locations in the South /Central Etobicoke area for a new elementary school to alleviate enrolment pressures in this area.*

The Board approved deferral of the report as follows:

“Deferred to March 2017 Board meeting and that staff bring back the report to include the following items:

- *Traffic report on personal injuries for the intersections of the East Mall and West Mall at Rathburn Rd, on the bridge over 427 and the intersection of Kipling and Rathburn.*
- *Traffic numbers at Kipling and Rathburn. Rationale for the report is the safety of students to travel by car or walk to school.*
- *Review of enrolment caps at Saint Gregory's to control over subscription at school.*

- *Report on the number of portables required as students move through the grades. Include growth numbers of portables if admission goes unchecked. What is the maximum number of students that can be placed in the school?*
- *Include all Boundary scenarios including all updated figures. List area residential developments where available.*

The cumulative staff time dedicated to this endeavour was 130 hours.

B. PURPOSE

To provide a summary of the process undertaken in proposing a boundary solution in an attempt to balance school enrolment among the group of schools in the review. Additionally, this report will address outstanding community concerns and suggest accommodation options for future consideration.

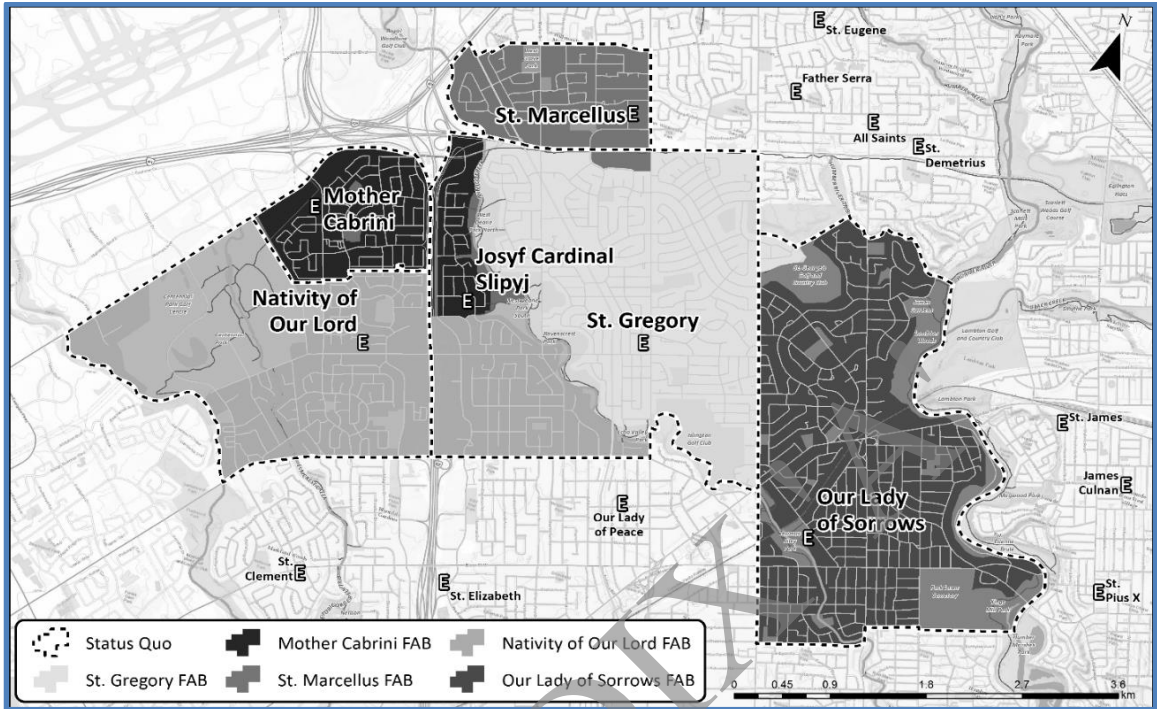
C. BACKGROUND

1. The initiation of a Boundary Review for St. Gregory, Nativity of Our Lord, Mother Cabrini, St. Marcellus and Our Lady of Sorrows elementary schools was approved by the Board on January 21, 2016 and February 9, 2016.
2. The Boundary Review, undertaken in accordance with Elementary School Attendance Boundary Review Policy (S.A.03), spanned approximately six months, with public meetings held on November 15, 2016 and December 12, 2016. Members of the Boundary Review Committee (BRC) also met on several occasions as a group for further discussion as is required under the policy.
3. Minutes from the public meetings are included in *Appendix 'A'*. All information discussed as part of the Boundary Review process, materials provided to the BRC for consideration, and all notes from public meetings have been made available on the Board's website.
4. The BRC assessed and discussed all boundary options including status quo, the staff option, and additional options discussed during the BRC meetings (*Appendix 'B'*). The BRC concluded that consensus could not be reached.

D. EVIDENCE/RESEARCH/ANALYSIS

1. Resulting from BRC discussions and community feedback, staff recommend that the attendance boundaries for St. Gregory, Nativity of Our Lord, Mother Cabrini, St. Marcellus and Our Lady of Sorrows remain status quo (unchanged). Additionally, staff will continue to investigate possible locations in the South/ Central Etobicoke area to accommodate a new elementary school is consistent with the direction of the LTAPP. A new school in the area will alleviate enrolment pressures. In order to admit approximately 150 FDK students for September 2017, up to 3 portables may be required at St. Gregory. Staff will fully assess portable requirements as part of the annual portable plan which is expected at Board in March 2017.
2. St. Gregory is oversubscribed with an enrolment of 700 students and a utilization rate of 121%. St. Gregory's enrolment is projected to steadily increase.
3. Nativity of Our Lord has capacity to allow for some degree of boundary alignment in this area with an enrolment of 433 students and a utilization rate of 80%.
4. Mother Cabrini is a small school with an enrolment of 178 students and a utilization rate of 81%.
5. St. Marcellus is operating slightly above capacity with an enrolment of 414 students and a utilization rate of 102%.
6. Our Lady of Sorrows is operating above capacity with an enrolment of 783 students and a utilization rate of 138%, and was added to the review for the limited purpose of reviewing the boundary shared with St. Gregory.
7. To assist the BRC with its discussion on boundary solutions, Planning staff submitted the following option for consideration as part of the review process and in accordance with *Elementary School Attendance Boundary Review Policy (S.A.03)*. The map and table below demonstrates status quo projections, as well as the impact on enrolment following the boundary adjustment originally presented by staff.

Staff Option



St. Gregory	OTG Cap.	2016 Current	2017 Proj.	2020 Proj.	2024 Proj.	2028 Proj.
Status Quo	580	700	708	796	880	894
% Utilization		121%	122%	137%	152%	154%
After Proposed Boundary Adjustment		700	681	679	657	618
% Utilization		121%	117%	117%	113%	107%

Nativity of Our Lord	OTG Cap.	2016 Current	2017 Proj.	2020 Proj.	2024 Proj.	2028 Proj.
Status Quo	541	443	428	431	425	425
% Utilization		80%	79%	80%	79%	79%
After Proposed Boundary Adjustment		433	447	506	575	613
% Utilization		80%	83%	94%	106%	113%

Mother Cabrini	OTG Cap.	2016 Current	2017 Proj.	2020 Proj.	2024 Proj.	2028 Proj.
Status Quo	219	178	181	202	223	224
% Utilization		81%	83%	92%	102%	102%
After Proposed Boundary Adjustment		178	186	220	259	269
% Utilization		81%	85%	101%	118%	123%

St. Marcellus	OTG Cap.	2016 Current	2017 Proj.	2020 Proj.	2024 Proj.	2028 Proj.
Status Quo	407	414	427	430	428	426
% Utilization		102%	105%	106%	105%	105%
After Proposed Boundary Adjustment		414	436	455	466	471
% Utilization		102%	107%	112%	115%	116%

Our Lady of Sorrows	OTG Cap.	2016 Current	2017 Proj.	2020 Proj.	2024 Proj.	2028 Proj.
Status Quo	568	783	777	788	731	741
% Utilization		138%	137%	139%	129%	131%
After Proposed Boundary Adjustment		783	777	787	730	739
% Utilization		138%	137%	139%	128%	130%

8. Development

Central Etobicoke is an area experiencing significant growth in the City of Toronto. The table below provides forecasted residential development units and associated projected student yields for each school under review. For further detail, refer to *Appendix 'C'*.

School	Total Units	Projected Student Yield
St. Gregory	1,305	83.7
Nativity of Our Lord	196	35
Mother Cabrini	38	12.7
St. Marcellus	152	29.1
Our Lady of Sorrows	1,941	102.8
Total	3,623	263.3

9. **BRC Comments and Feedback**

The BRC conducted an assessment of all boundary options including status quo, the staff option, and additional options discussed through the course of the BRC meetings. The BRC concluded that consensus could not be reached for the following reasons:

- bussing across major highways was not acceptable.
- moving special needs programs was perceived to be detrimental and disruptive to students.
- opportunity for a new school in the area requires exploration and would be a better solution to the enrolment pressures.

10. **Traffic Report**

The following is a summary of the traffic reports from the period of January 1, 2012 to December 31, 2016. The full reports are available as *Appendix 'D' and 'E'*.

Intersections of the East Mall and West Mall at Rathburn Rd, on the bridge over 427 and the intersection of Kipling and Rathburn.

- Between 2012 and 2016 there were zero fatalities and 26 personal injuries.
- Of the 26 personal injuries 6 were pedestrian collisions and 2 were cyclist collisions.
- Most collisions occurred between 8am to 9am as well as 3pm to 6pm.
- There were no school bus or school guard collisions.
- Collisions were categorized by minimal or minor and 1 major collision.
- 5 collisions occurred in the 0-4yr age range and 10 collisions occurred from the 5-14yr age range.

Intersection of Kipling and Rathburn.

- a) Between 2012 and 2016 there were zero fatalities and 7 personal injuries.
- b) Of the 7 personal injuries 1 was a pedestrian collision and 1 was a cyclist collision.
- c) Most collisions occurred at 8am as well as at 4pm.
- d) There were no school bus or school guard collisions.
- e) Collisions were categorized by minimal or minor, no major collision.
- f) 2 collisions occurred in the 0-4yr age range and 3 collisions occurred from the 5-14yr age range.

11. **Portable Needs**

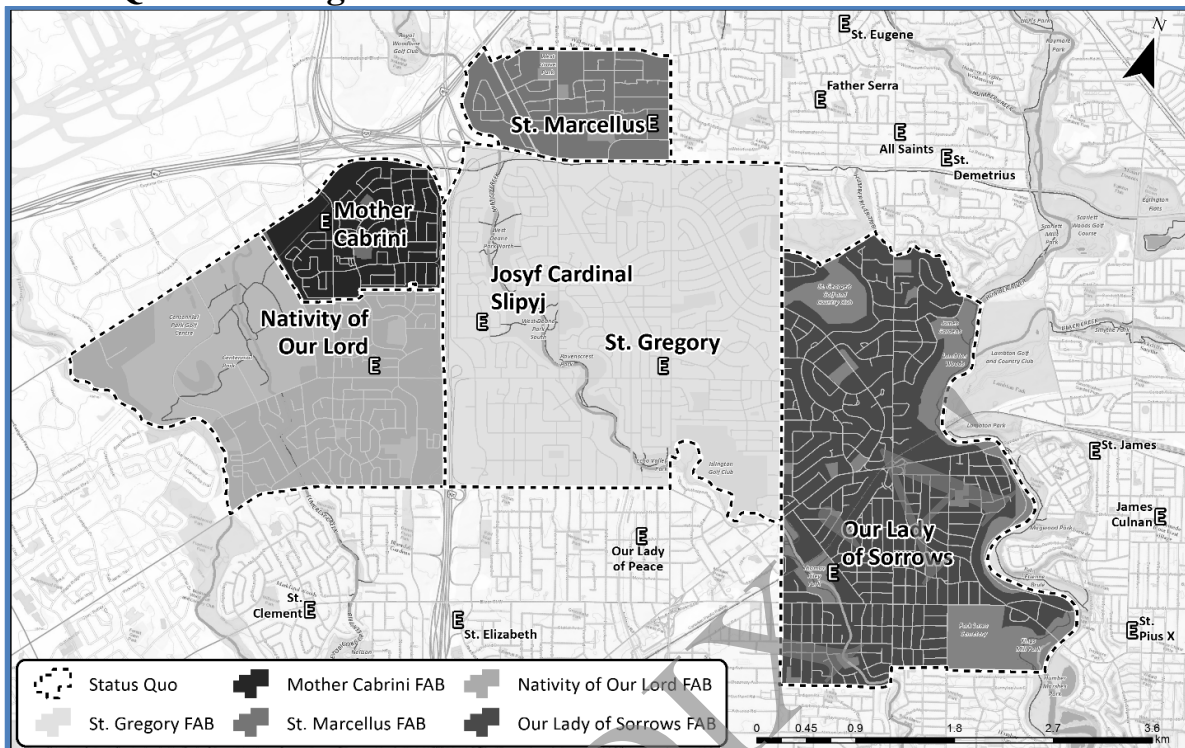
St Gregory currently has 5 purpose built FDK spaces. The projected September 2017 enrolment is approximately 734 students. In order to accommodate the projected enrolment staff have calculated the need for three (3) portables for 2017. However given the current 4.5 FDK allocation cap in place at St. Gregory there will be a requirement for two (2) portables for 2017.

With a cap of 5 FDK classes and added enrolment pressure from the Extended French program, enrolment could grow to over 960 students given current enrolment trends and accounting for residential growth in the area. Although the washroom capacity in the school allows for over 1200 students, the number of portable classrooms required to house this number of students would reach 11 to 12 portables on site. Portable needs are assessed annually based on enrolment projections and needs are confirmed and reported on in April of each year.

12. **Summary**

Resulting from Boundary Review Committee (BRC) discussions, a lack of consensus among the BRC members and community feedback received, staff recommend that the attendance boundaries for St. Gregory, Nativity of Our Lord, Mother Cabrini, St. Marcellus and Our Lady of Sorrows remain status quo (unchanged) as shown in the map below. Additionally, staff will continue to investigate possible locations in the South/ Central Etobicoke area to accommodate enrolment growth. This direction is consistent with the recommendations of the Long-Term Accommodation Program Plan.

Status Quo - Existing Attendance Boundaries



13. Transportation

As the BRC did not reach consensus, the existing attendance boundaries will remain in place as shown in the map below resulting in no additional transportation costs.

E. ACTION PLAN

In accordance with the Elementary School Attendance Boundary Review Policy (S.A.03), the following sequence of Board meetings will be required prior to final approval of recommendations.

March 2, 2017 – INTERIM REPORT

Student Achievement and Well Being Committee

- Interim Report including ARC recommendations is considered.
- Defer any final decisions on pupil accommodation recommendations.

March 9, 2017– DELEGATIONS

Corporate Services, Strategic Planning and Property Committee

- Opportunity for public input through delegations and written submissions in response to the Interim Report.
- Defer any final decisions on school accommodation recommendations.

March 30, 2017 – FINAL REPORT

Regular Board

- Final report from Director of Education is considered, which takes into account the results of public input provided at the previous Board meetings.
- Board to make final decision on pupil accommodation recommendations.

F. STAFF RECOMMENDATION

That the following recommendations be considered for approval at the meeting of the Board of Trustees on March 30, 2017.

1. The attendance boundaries for St. Gregory, Nativity of Our Lord, Mother Cabrini, St. Marcellus and Our Lady of Sorrows remain status quo (unchanged).
2. That, in accordance with the Long-Term Accommodation Program Plan (LTAPP), staff investigate and assess possible locations in the South /Central Etobicoke area for a new elementary school to alleviate enrolment pressures in this area.

St. Gregory, Nativity of Our Lord, Mother Cabrini, St. Marcellus, Our Lady of Sorrows

Boundary Review Committee Meeting - May 16, 2016

*Notes are based on impressions and interpretation of meeting discussion in preparation of the formal commencement of the public consultation process.

- Minimum of one public meeting (May 30th)
- letter will be sent out once public meeting date is confirmed
- has new and upcoming development been factored into enrollment projections? (Nativity, Marcellus)
- Dundas strip-secondary plan, may affect for 20 to 30 years
- pockets of development- Noresman and Islington area
- request for a ward summary of development-planning dept will provide
- boundary change takes 10 years to lead to change because of sibling rule
- using the river as a boundary
- proposal to take more from the initial area proposed from the OLS SARC
- special needs classroom shows up as “under utilized” because it is under the ministry average class size
- Nativity, 4 portables, only 2 are being used
- Richview plaza may be developed like Humbertown plaza will have impact on projected enrollment
- SARC had an impact, being in this boundary review will reduce sorrows by 1%-only a couple students, two streets
- numbers are high at St Greg’s, community can present suggestions
- can email suggestions to Doug tomorrow with alternate suggestions
- diversion may not be worthwhile it is such a minimum amount of students, it was suggested because it is part of the same court
- safety concern to move the Marcellus boundary south because of Eglinton with students crossing
- request for info on how many portables are at each school
- transfer one special needs class to Mother Cabrini from Nativity
- send more students to Nativity for a capital fix?
- Leonardo Da Vinci public school site on Allenhurst as a possible new site for overflow, board interested to purchase
- public meeting, one scenario suggested would be preferable
- May 30th next committee meeting at 6:30, public meeting will be in September

St. Gregory Boundary Review Committee Meeting May 30, 2016

*Notes are based on impressions and interpretation of meeting discussion in preparation of the formal commencement of the public consultation process.

NOTES:

Purpose of the Boundary Review – to “right-size” the schools. Specifically, to avoid future over-enrolment at St. Gregory by adjusting the boundaries and shifting some enrolment from St. Gregory to Nativity of Our Lord and Mother Cabrini CS.

- Trustee Andrachuk – she wouldn’t be able to recommend Scenarios 4 or 5 (OLS suggestion). Has plans for a new school site at Buttonwood PS (TDSB). The Ward needs a new elementary school.
- According to policy, boundaries are usually major arterial roads and/or natural boundaries such as rivers, ravines, other natural divides
- Nativity OL prefers Scenario 2 or 4
- St. Gregory prefers Scenario 2 (except for little chunk of St. Marcellus below Eglington).
- OLS prefers Scenario 4 or status quo
- St. Marcellus has least impact but school is currently full. St. Marcellus currently has 100 JK/SK pupils. This leads to a school of 500.
- Mother Cabrini questioned Eastern Rites schools, why they are not included and why they are treated as specialty schools.
- OLOS mentioned that they are looking for a 5% reduction in population.
- Mother Cabrini submitted notes for a new scenario (Susie/Barb). These will be Scenario 6 and 7
- Small blue chunk of St. Marcellus below Eglington Avenue is not necessary or a wise move. Those students would have to cross Eglington Ave. Transportation would not be provided.
- Some parents questioned the enrolment projections based on their own knowledge of housing projects, infill housing in their areas. Barbara L mentioned new developments and the yield factors.

- All schools in the area have enrolment pressures.
- Vita Perri – it is important for us, as a committee, to do the right thing, for now and for the future. Follow the principles of boundary review/creation in the policy.
- Portables help the Board make a business case to the Ministry when applying for capital funding. Current portables at these BR schools: OLS (8), Nativity (4), St. Marcellus (2), Mother Cabrini (1), St. Gregory (0)
- Need to provide a list of all special programs in each of these five schools (e.g.) Nativity of Our Lord has: Behaviour ISP, DD/ME ISP, Extended French
- At Mother Cabrini there will be a Principal change for next year. Need to allow the new Principal to see the data related to the boundary review and get up to speed.
- Nativity feels their facilities are poor, gym is inadequate. Accepting more students will be a challenge.
- Request to Planning to show: 1) % utilization of each of these 5 schools and 2) % utilization of all 5 as a group. Also, show % utilization of all Ward 2 elementary schools in a list/chart.
- COMMITTEE DECISIONS:
 - 1) Eliminate Scenarios 3 and 5
 - 2) Eliminate small teal section of St. Marcellus south of Eglington Ave
 - 3) Eliminate small pink section of St. Gregory, east of Islington Ave
 - 4) There will be a BR Committee meeting in September
 - 5) Public meeting will be in early October

ACTIVITY SINCE JUNE 2016

PURPOSE OF BOUNDARY REVIEW – REVIEW SCHOOL BOUNDARIES OF ST. GREGORY, MOTHER CABRINI, NATIVITY OF OUR LORD, OUR LADY OF SORROWS AND ST. MARCELLUS IN ORDER TO AMELIORATE ISSUES CREATED BY CURRENT OVER ENROLLMENT AT ST. GREGORY AND EXPECTED CONTINUATION OF GROWING ENROLMENT

- Committee reviewed scenarios illustrating proposed boundary options prepared by TCDSB planning
- Scenario 1, 2 and 4 to be looked at (Scenarios 3 and 5 were eliminated as options at May 2016 meeting)
- As result of May meeting, TCDSB planning refined scenarios through creation of 3 variations of Scenario 2 referred to as 2A, 2B, and 2C and 3 variations of Scenario 4 referred to as 4A, 4B, and 4C.
- Mr. Yack described activity following May 2016 meeting -Received numerous e-mails from individuals residing in Glen Park community association indicating association was aware of some of the scenarios/changes proposed
- Community association/resident e-mails indicated concerns regarding: children attending a school other than St. Gregory while parishioners of St. Gregory, children in neighborhood attending different Catholic schools, and safety concerns – traffic problems, children crossing streets
- Over enrollment at St. Gregory's has necessitated the following construction/renovation projects: staff room to become classroom for Grade SK/1, music room to become new staff room
- Instrumental music at St. Gregory school is taught on the gym stage therefore 2 classes occur simultaneously - physical education and instrumental music
- St. Gregory is facing the greatest pressure because it is a large school in a neighbourhood where new homes are being built, in some cases 2 or 3 new homes are being built on lots which formerly had one house. Community believes the school will continue to grow

REVIEW OF SCENARIOS

SCENARIO 1 - Status Quo- all school boundaries remain the same

SCENARIO 2 - Realignment of boundaries of all 5 schools

2A - St. Marcellus boundary remains the same – panhandle south of St. George Golf stays with to OLS

2B - Mother Cabrini's boundary extends further south than in Scenario 2, Nativity gains Glen Park neighbourhood

2C - Mother Cabrini extends further south and Nativity captures area between 427 & Mimico Creek up to Eglinton, St. Greg's loses area

SCENARIO 4 - Balances enrolment across schools

4A - 4 schools change, St. Marcellus remains status quo

4B – 4 schools change - Cabrini gains south and east between 427 & Mimico Creek up to Eglinton

4C – 4 schools change - Cabrini gains south while Nativity gains east between 427 & Mimico Creek up to Eglinton

Trustee Andrachuk proposed another scenario referred to as **2D** – which extends the east side boundary of Nativity to include the East Mall, therefore St. Gregory loses East Mall

Nativity community opposed to Scenario 4D

FORMAT OF PUBLIC MEETING

- Large turnout is anticipated as 5 schools may be affected
- Format- present 3 to 4 scenarios to public
- Scenarios will be exhibited on easels as well as multiple screens for viewing and comparison
- Planning department will present the scenarios and explain the differences between the scenarios as well as the possible impact on school/community - boundary reviews provide opportunity for change – redistribute enrolment/population – test prospect of some changes/minor changes to adjust enrolment and try to find solution

SCENARIO 1 – PRESENT/STATUS QUO - St. Gregory current enrolment stands at 722 (22 students over cap)

Discuss impact of continued growth on St. Gregory School – ensure full transparency

If status quo and growing enrolment continue results may be portables, staggered/revolving recess

Discuss what would happen at all the schools assuming enrolment at St. Greg's continues to rise

SCENARIO 2 A - REALIGNMENT OF BOUNDARIES OF ALL 5 SCHOOLS

Discuss impact

SCENARIO 4 A- ALL 5 SCHOOLS HAVE BOUNDARY CHANGES – BALANCES ENROLMENT ACROSS SCHOOLS

Discuss impact

TCDSB Planning will create two more scenarios – 2D and 4D

Trustee Andrachuk suggests another committee meeting take place before the public meeting

Committee will meet on Thurs. Sept. 29 at 7 p.m. at Nativity to decide on scenarios to be presented at public meeting

Public Consultation Meeting - Opportunities for oral and written feedback will be provided

CONCERNS/ISSUES

Ms. Hipsz (Nativity) – would like to increase student enrolment but worries that the school facility can't handle this

Nativity is an original building with a gym which is too small and lacking change rooms

The school has only 2 washrooms, one for boys, the other for girls

How can the school address the needs of a larger enrolment – in terms of facilities – washroom

Nativity can't support 2B, 2C, 4B, and 4C.

Ms. McLean (OLS) – OLS and St. Greg's Status Quo – both school are over enrolled

Trustee Andrachuk – a new school is needed to serve as replacement school for Nativity and Mother Cabrini

Ms. Perri (St. Gregory) – the community is concerned and divided, St. Gregory can't accommodate the students

Mr. Yack– Status Quo would represent many of the residents of the St. Gregory neighbourhood, but not all

PURPOSE OF BOUNDARY REVIEW – REVIEW SCHOOL BOUNDARIES OF ST. GREGORY, MOTHER CABRINI, NATIVITY OF OUR LORD, OUR LADY OF SORROWS AND ST. MARCELLUS IN ORDER TO AMELIORATE ISSUES CREATED BY CURRENT OVER ENROLLMENT AT ST. GREGORY AND EXPECTED CONTINUATION OF GROWING ENROLMENT

- TCDSB planning presented new scenarios based on feedback and recommendations made by committee members at previous meetings
- Scenarios 2 D and 4 D were introduced and explained by TCDSB planning for the committee's consideration
- Committee members discussed the scenarios and shared feedback. Nativity of Our Lord parent representative stated that Nativity of Our Lord is open to welcoming more students as a result of boundary changes but noted the need for improvements to the physical facilities resulting from increased enrolment
- Nativity of Our Lord parent representative wondered why school boundaries don't match parish boundaries and asked whether having an alignment of school-parish boundaries might serve as a solution to over enrolment
- The placement of portable classrooms at St. Gregory School was discussed as an possible option in the future if student enrolment continues to grow
- Committee members decided that 5 scenarios would be presented at the Public Consultation Meeting
- The following scenarios will be presented at the Public Meeting:
Status Quo / Scenario 2A / Scenario 2D / Scenario 4A / Scenario 4D
- The Public Consultation Meeting will be held on Tuesday, November 15th, 2016 at 7:00 pm at St. Gregory Catholic School located at 126 Rathburn Road
- The committee discussed methods of presenting the 5 boundary scenarios at the public meeting including displaying hard copies in multiple locations as well as multi-screen displays
- The committee reviewed suggestions as to the structure of the meeting to maximize opportunities for attendees to access information and to ask questions and/or share concerns including: Skype, and digital recording of public meeting, including real-time recording
- Committee members considered the most effective means of collecting feedback from the attendees at the public meeting including: online surveys via Survey Monkey, paper and pencil surveys, discussion groups, e-mails, and letters
- Preparations are underway to ensure an effective public consultation meeting.

REVIEW OF SCENARIOS

SCENARIO 1 - Status Quo- all school boundaries remain the same

SCENARIO 2 - Realignment of boundaries of all 5 schools

2A - St. Marcellus boundary remains the same – panhandle south of St. George Golf stays with to OLS

2B - Mother Cabrini's boundary extends further south than in Scenario 2, Nativity gains Glen Park neighbourhood

2C - Mother Cabrini extends further south and Nativity captures area between 427 & Mimico Creek up to Eglinton, St. Greg's loses area

SCENARIO 4 - Balances enrolment across schools

4A - 4 schools change, St. Marcellus remains status quo

4B – 4 schools change - Cabrini gains south and east between 427 & Mimico Creek up to Eglinton

4C – 4 schools change - Cabrini gains south while Nativity gains east between 427 & Mimico Creek up to Eglinton

Trustee Andrachuk proposed another scenario referred to as **2D** – which extends the east side boundary of Nativity to include the East Mall, therefore St. Gregory loses East Mall

Nativity community opposed to Scenario 4D

FORMAT OF PUBLIC MEETING

- Large turnout is anticipated as 5 schools may be affected
- Format- present 3 to 4 scenarios to public
- Scenarios will be exhibited on easels as well as multiple screens for viewing and comparison
- Planning department will present the scenarios and explain the differences between the scenarios as well as the possible impact on school/community - boundary reviews provide opportunity for change – redistribute enrolment/population – test prospect of some changes/minor changes to adjust enrolment and try to find solution

SCENARIO 1 – PRESENT/STATUS QUO - St. Gregory current enrolment stands at 722 (22 students over cap)

Discuss impact of continued growth on St. Gregory School – ensure full transparency

If status quo and growing enrolment continue results may be portables, staggered/revolving recess

Discuss what would happen at all the schools assuming enrolment at St. Greg's continues to rise

SCENARIO 2 A - REALIGNMENT OF BOUNDARIES OF ALL 5 SCHOOLS

Discuss impact

SCENARIO 4 A - ALL 5 SCHOOLS HAVE BOUNDARY CHANGES – BALANCES ENROLMENT ACROSS SCHOOLS

Discuss impact

TCDSB Planning will create two more scenarios – 2D and 4D

Trustee Andrachuk suggests another committee meeting take place before the public meeting

Committee will meet on Thurs. Sept. 29 at 7 p.m. at Nativity to decide on scenarios to be presented at public meeting

Public Consultation Meeting - Opportunities for oral and written feedback will be provided

CONCERNS/ISSUES

Ms. Hipsz (Nativity) – would like to increase student enrolment but worries that the school facility can't handle this
 Nativity is an original building with a gym which is too small and lacking change rooms
 The school has only 2 washrooms, one for boys, the other for girls
 How can the school address the needs of a larger enrolment – in terms of facilities – washroom
 Nativity can't support 2B, 2C, 4B, and 4C.

Ms. McLean (OLS) – OLS and St. Greg's Status Quo – both school are over enrolled

Trustee Andrachuk – a new school is needed to serve as replacement school for Nativity and Mother Cabrini

Ms. Perri (St. Gregory) – the community is concerned and divided, St. Gregory can't accommodate the students

Mr. Yack– Status Quo would represent many of the residents of the St. Gregory neighbourhood, but not all

St Gregory's Notes December 12, 2016 – Public Meeting

Intro Comments

- Committee introductions
- Overview of process and recommended scenarios
 - Consensus = unanimous approval of a boundary review option

Trustee Andrachuk comments

- Thanks crowd for involvement
- Committee member challenged process
 - One more meeting of committee has been proposed and is necessary to satisfy concerns
 - Necessary to be open and transparent as part of the process
- Consensus not currently achieved
- Invitation for new information or comments that haven't been heard

Audience Comments and Questions

- Purpose of next meeting
 - To provide opportunity for a more fulsome conversation as a last attempt to find consensus. Meeting only of the committee early in the new year
- Concern that the Committee has not held its first public meeting. Not enough opportunity for input from public
 - Public consultation requirement in the policy is satisfied by input from committee members and first public meeting
- Criteria for redirection students if status quo remains the same?
 - Look for closest schools that have neighbouring space for parent to choose school
 - If space opens up it is offered to redirected student first
- When will round one questions be posted?
 - December 13th, 2016
- Why today's meeting?
 - To announce consensus or not. Concerns with process lead to necessity of another meeting
- Concerns over transparency of the process
- How will parents be informed of process/where to register
 - Board website
 - Register where SOAR tells you to. Any registration/admission changes would be communicated directly to the parent
- Are the enrollment projects still accurate given new development?
 - Numbers are updated in March. Currently working with 2016 numbers although new developments are considered
- Why still looking at the same options?
 - Status Quo is one option staff recommendation is another option. Additional options, including all of the options submitted by the public have been examined. However, the

staff recommendation remains the most effective if a change is made. The concern is maximizing use of space which is a requirement by the Ministry of education

- Bridge/427 concerns
- Opportunity for feedback at Board meetings
- Notice period? Consider longer implementation phase.
- Residents without children currently at school not represented on committee? Why not?
 - Input still being received. New policy will likely need revision.
- Transportation Concerns
- Community Proposals were they looked at?
 - Yes, many were unworkable or didn't address issues at hand
- Presentations can be made at any board or committee meeting of the Board of Trustees

APPENDIX 'A'

MINUTES
BOUNDARY REVIEW COMMITTEE MEETING
DATE: December 19th, 2016
TIME: 7:00 pm

Attendance

Doug Yack, Superintendent
Mario Silva, Comptroller Planning
Jessica Peake, Senior Manager of Planning and Assessment
Ann Andrachuck, Trustee
St. Gregory – Principal Joe Pannozzo, Vita Peri (CSPA Rep)
Mother Cabrini - Principal Sherryann Ambrose, Nicole Arsenault (CSPA Rep)
Nativity of Our Lord – Michael Fauria, Annette Heim (CSPA Rep)
St. Marcellus – Principal Connie Giordano, Nancy Ciollo (CSPA Rep)
Our Lady of Sorrows - Principal Joe Genova, Myron Tymochko (CSPA Rep)

Introduction / Prayer

Purpose of meeting – To discuss community feedback

Materials handed out included:

- Power Point Presentation from November 15, 2016 Public Meeting (Showing All Scenarios)
- An email from Louise Kolanko
- An email from Jenny Mboutsiadis
- The question and answers from the November 15, 2016 Public Meeting

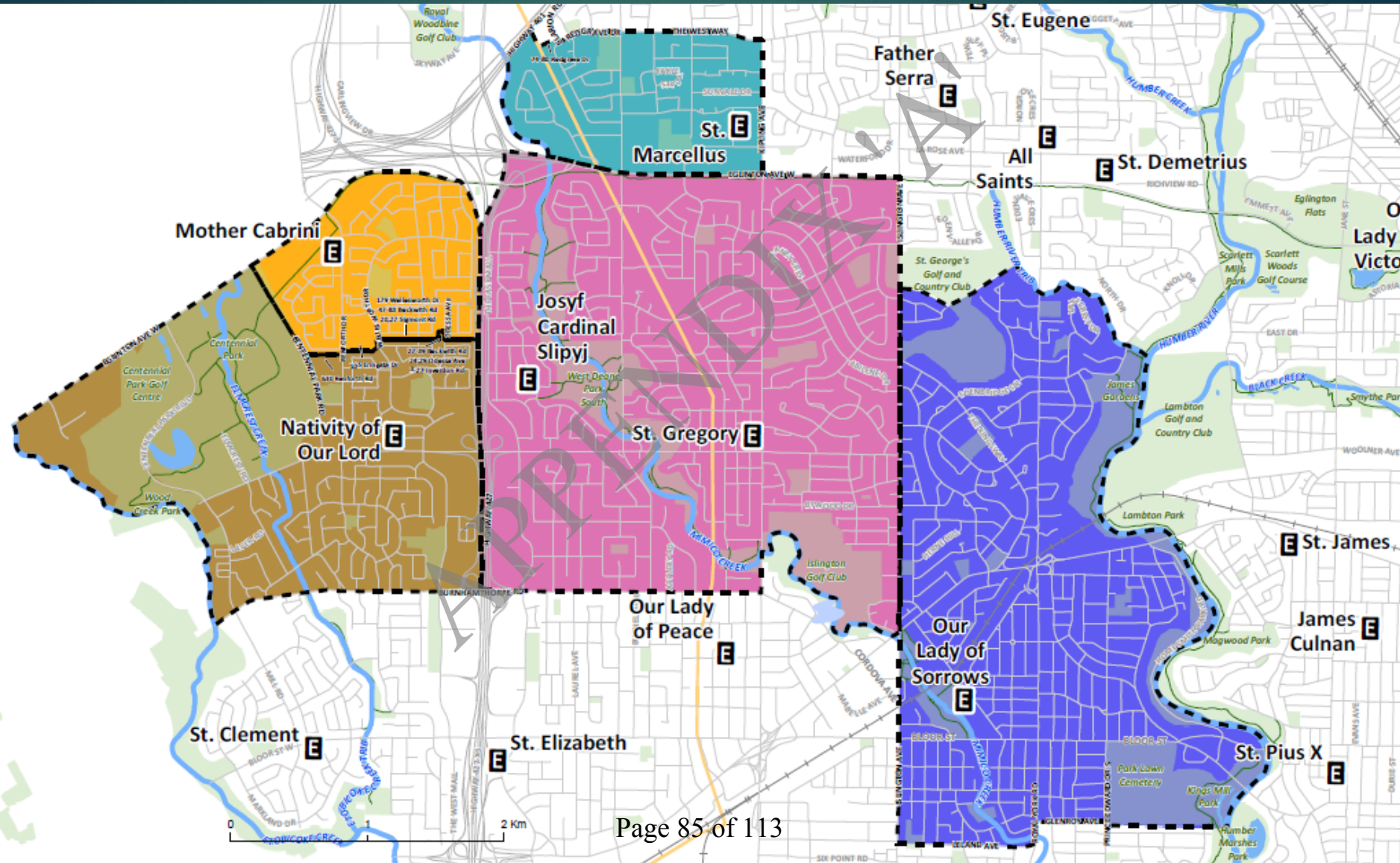
Notes:

- BRC members reviewed the material handed out
- The BRC discussed what was heard at the Public meeting on December 12, 2016
- Further discussion regarding the possible outcomes of this boundary review.
- The BRC could not come to a consensus on any boundary option or alternative recommendation discussed thus far

BRC Decision & Next Steps:

- The BRC conducted a thorough assessment of all boundary options including status quo, the staff-preferred option, and Boundary Review Committee options discussed during the BRC meetings, and have concluded that consensus cannot be reached at this time.
- A report will go forward to Board, a Delegations Process will occur, and a Final Decision by Trustees will be made.

Status Quo



Projected Student Numbers – Status Quo



ST GREGORY	OTG	2016	2020	2024	2028
Status Quo: Pupil Count	580	700	796	880	894
Status Quo: Rate of Utilization (%)		121%	137%	152%	154%

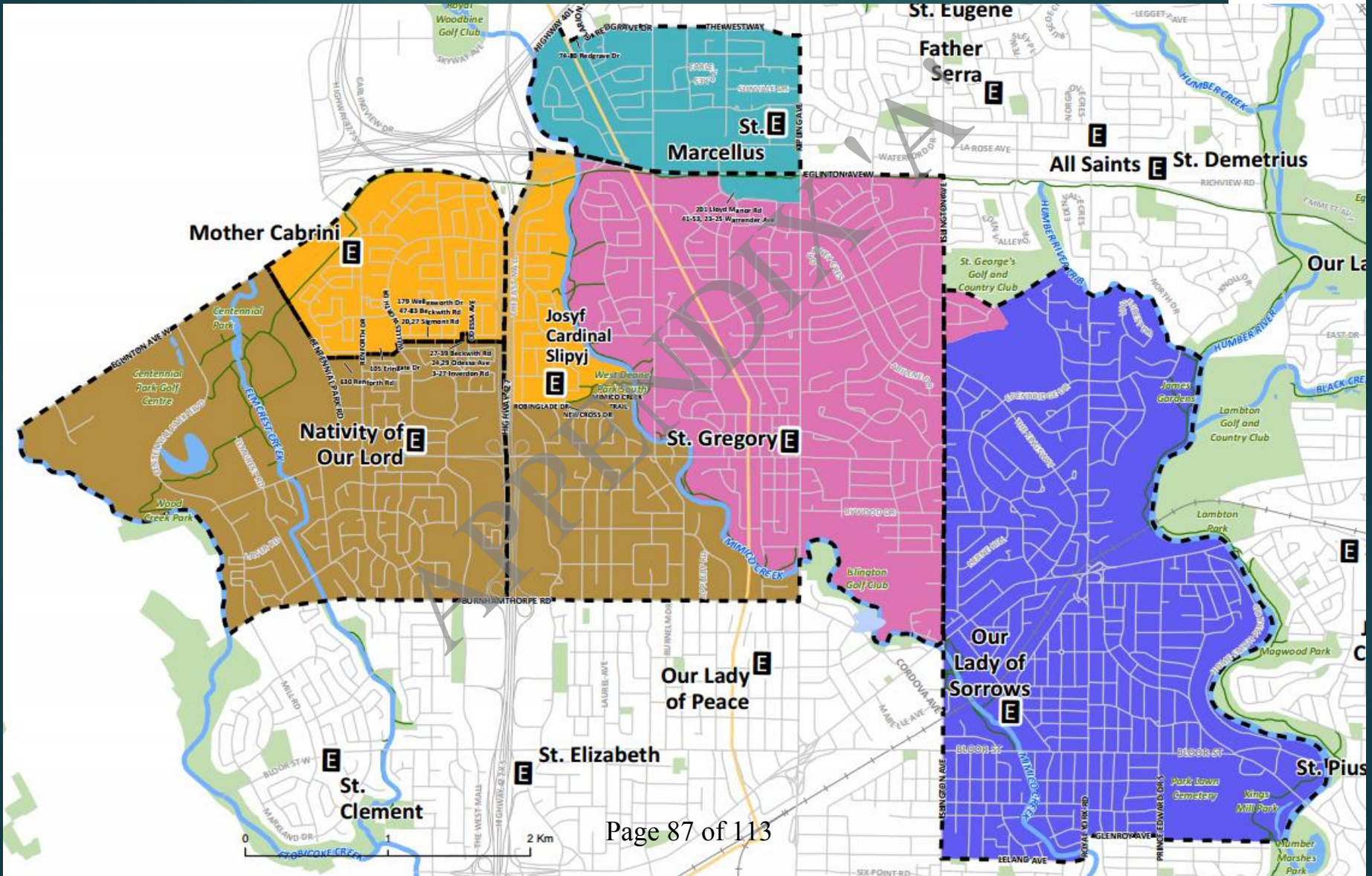
NATIVITY OF OUR LORD	OTG	2016	2020	2024	2028
Status Quo: Pupil Count	541	433	431	425	425
Status Quo: Rate of Utilization (%)		80%	80%	79%	79%

MOTHER CABRINI	OTG	2016	2020	2024	2028
Status Quo: Pupil Count	219	178	202	223	224
Status Quo: Rate of Utilization (%)		81%	92%	102%	102%

OUR LADY OF SORROWS	OTG	2016	2020	2024	2028
Status Quo: Pupil Count	568	783	788	731	741
Status Quo: Rate of Utilization (%)		138%	139%	129%	131%

ST MARCELLUS	OTG	2016	2020	2024	2028
Status Quo: Pupil Count	407	414	430	428	426
Status Quo: Rate of Utilization (%)		102%	106%	105%	105%

Staff Recommended Boundary Scenario



ST GREGORY	OTG	2016	2020	2024	2028
Status Quo: Pupil Count	580	700	796	880	894
Status Quo: Rate of Utilization (%)		121%	137%	152%	154%
After Boundary Change: Pupil Count			679	657	618
After Boundary Change: Rate of Utilization (%)			117%	113%	107%

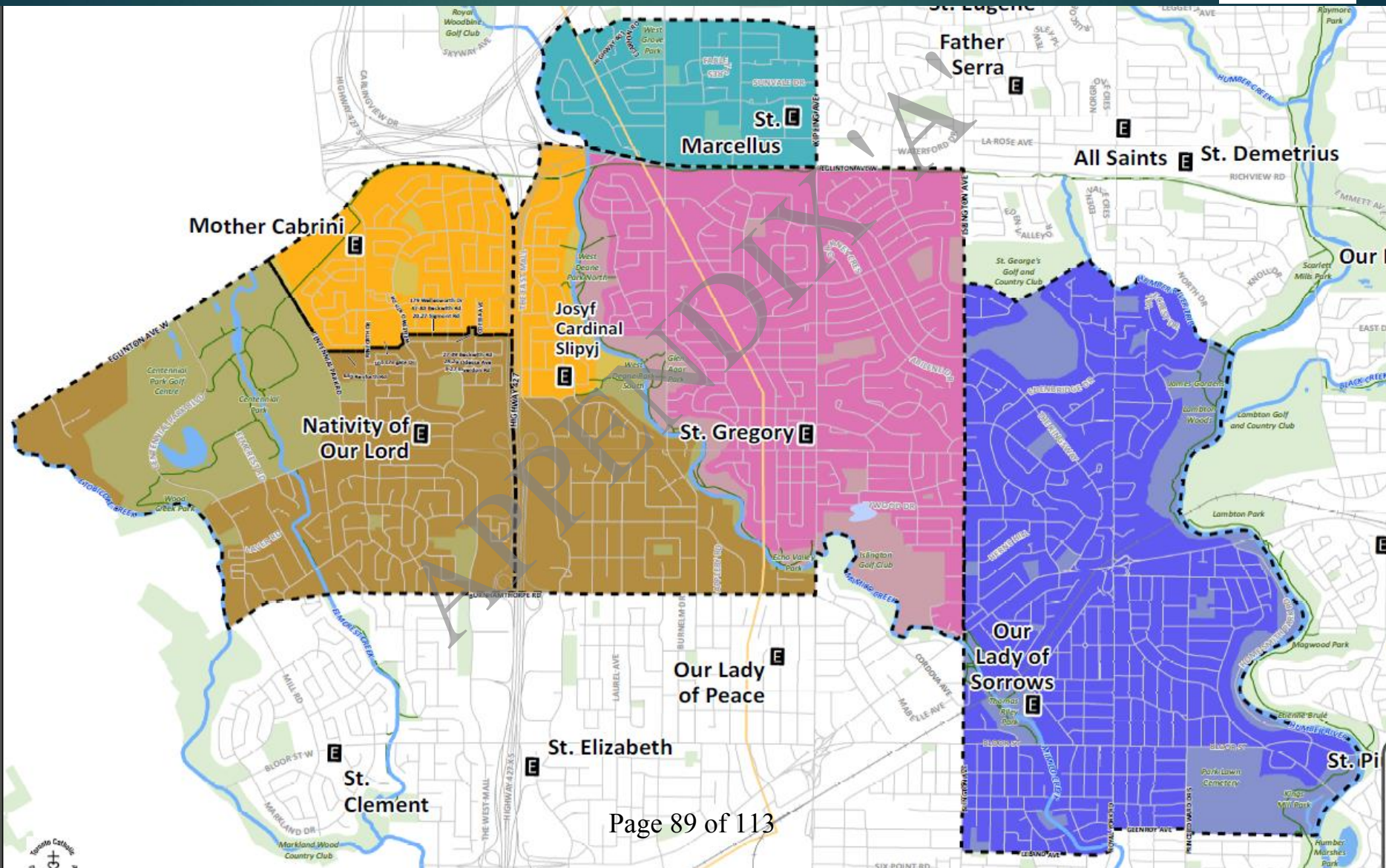
NATIVITY OF OUR LORD	OTG	2016	2020	2024	2028
Status Quo: Pupil Count	541	433	431	425	425
Status Quo: Rate of Utilization (%)		80%	80%	79%	79%
After Boundary Change: Pupil Count			506	575	613
After Boundary Change: Rate of Utilization (%)			94%	106%	113%

MOTHER CABRINI	OTG	2016	2020	2024	2028
Status Quo: Pupil Count	219	178	202	223	224
Status Quo: Rate of Utilization (%)		81%	92%	102%	102%
After Boundary Change: Pupil Count			220	259	269
After Boundary Change: Rate of Utilization (%)			101%	118%	123%

OUR LADY OF SORROWS	OTG	2016	2020	2024	2028
Status Quo: Pupil Count	568	783	788	731	741
Status Quo: Rate of Utilization (%)		138%	139%	129%	131%
After Boundary Change: Pupil Count			787	730	739
After Boundary Change: Rate of Utilization (%)			139%	128%	130%

ST MARCELLUS	OTG	2016	2020	2024	2028
Status Quo: Pupil Count	407	414	430	428	426
Status Quo: Rate of Utilization (%)		102%	106%	105%	105%
After Boundary Change: Pupil Count			455	466	471
After Boundary Change: Rate of Utilization (%)			112%	115%	116%

Committee Discussion - Scenario 1





ST GREGORY	OTG	2016	2020	2024	2028
Status Quo: Pupil Count	580	700	796	880	894
Status Quo: Rate of Utilization (%)		121%	137%	152%	154%
After Boundary Change: Pupil Count			659	634	602
After Boundary Change: Rate of Utilization (%)			114%	109%	104%

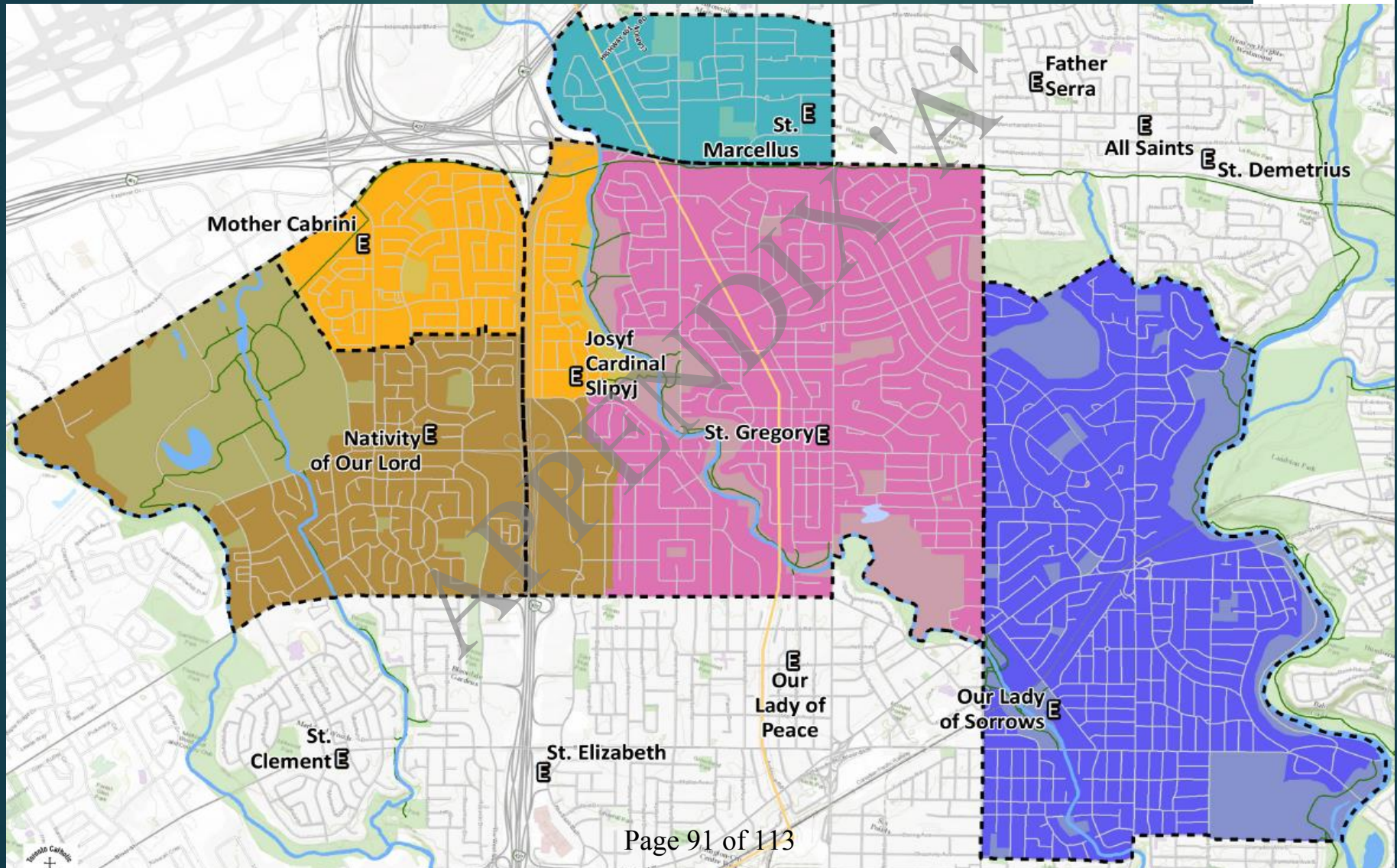
NATIVITY OF OUR LORD	OTG	2016	2020	2024	2028
Status Quo: Pupil Count	541	433	431	425	425
Status Quo: Rate of Utilization (%)		80%	80%	79%	79%
After Boundary Change: Pupil Count			551	635	673
After Boundary Change: Rate of Utilization (%)			102%	117%	124%

MOTHER CABRINI	OTG	2016	2020	2024	2028
Status Quo: Pupil Count	219	178	202	223	224
Status Quo: Rate of Utilization (%)		81%	92%	102%	102%
After Boundary Change: Pupil Count			220	259	269
After Boundary Change: Rate of Utilization (%)			101%	118%	123%

OUR LADY OF SORROWS	OTG	2016	2020	2024	2028
Status Quo: Pupil Count	568	783	788	731	741
Status Quo: Rate of Utilization (%)		138%	139%	129%	131%
After Boundary Change: Pupil Count			788	731	741
After Boundary Change: Rate of Utilization (%)			139%	129%	131%

ST MARCELLUS	OTG	2016	2020	2024	2028
Status Quo: Pupil Count	407	414	430	428	426
Status Quo: Rate of Utilization (%)		102%	106%	105%	105%
After Boundary Change: Pupil Count	Page 90 of 113		430	428	426
After Boundary Change: Rate of Utilization (%)			106%	105%	105%

Committee Discussion - Scenario 2





1

S
c
e
n
a
r
i
o

2

ST GREGORY	OTG	2016	2020	2024	2028
Status Quo: Pupil Count	580	700	796	880	894
Status Quo: Rate of Utilization (%)		121%	137%	152%	154%
After Boundary Change: Pupil Count			681	679	658
After Boundary Change: Rate of Utilization (%)			117%	117%	113%

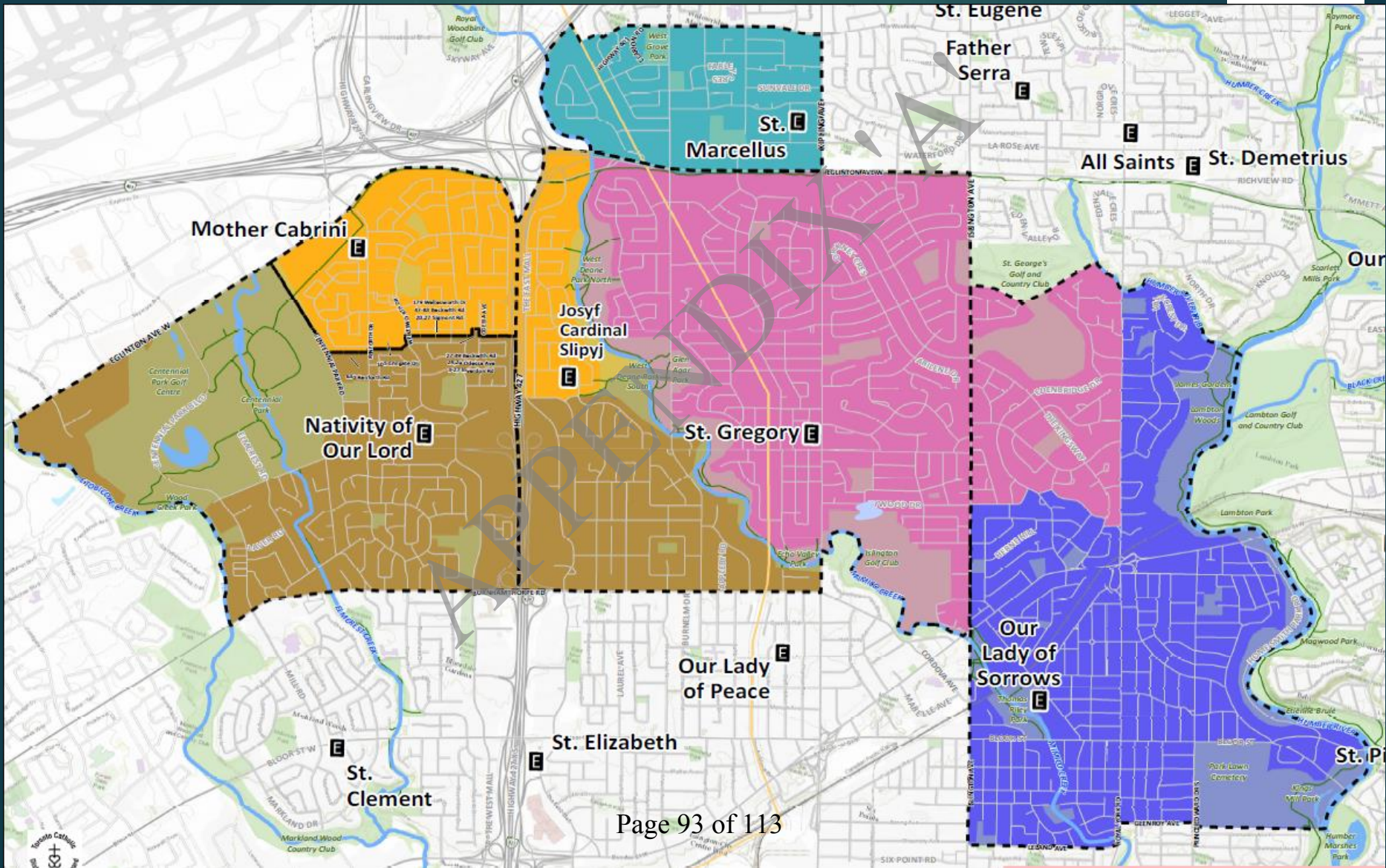
NATIVITY OF OUR LORD	OTG	2016	2020	2024	2028
Status Quo: Pupil Count	541	433	431	425	425
Status Quo: Rate of Utilization (%)		80%	80%	79%	79%
After Boundary Change: Pupil Count			528	590	617
After Boundary Change: Rate of Utilization (%)			98%	109%	114%

MOTHER CABRINI	OTG	2016	2020	2024	2028
Status Quo: Pupil Count	219	178	202	223	224
Status Quo: Rate of Utilization (%)		81%	92%	102%	102%
After Boundary Change: Pupil Count			220	259	269
After Boundary Change: Rate of Utilization (%)			101%	118%	123%

OUR LADY OF SORROWS	OTG	2016	2020	2024	2028
Status Quo: Pupil Count	568	783	788	731	741
Status Quo: Rate of Utilization (%)		138%	139%	129%	131%
After Boundary Change: Pupil Count			788	731	741
After Boundary Change: Rate of Utilization (%)			139%	129%	131%

ST MARCELLUS	OTG	2016	2020	2024	2028
Status Quo: Pupil Count	407	414	430	428	426
Status Quo: Rate of Utilization (%)		102%	106%	105%	105%
After Boundary Change: Pupil Count			430	428	426
After Boundary Change: Rate of Utilization (%)			106%	105%	105%

Committee Discussion - Scenario 3





1

S
c
e
n
a
r
i
o

3

ST GREGORY	OTG	2016	2020	2024	2028
Status Quo: Pupil Count	580	700	796	880	894
Status Quo: Rate of Utilization (%)		121%	137%	152%	154%
After Boundary Change: Pupil Count			688	683	662
After Boundary Change: Rate of Utilization (%)			119%	118%	114%

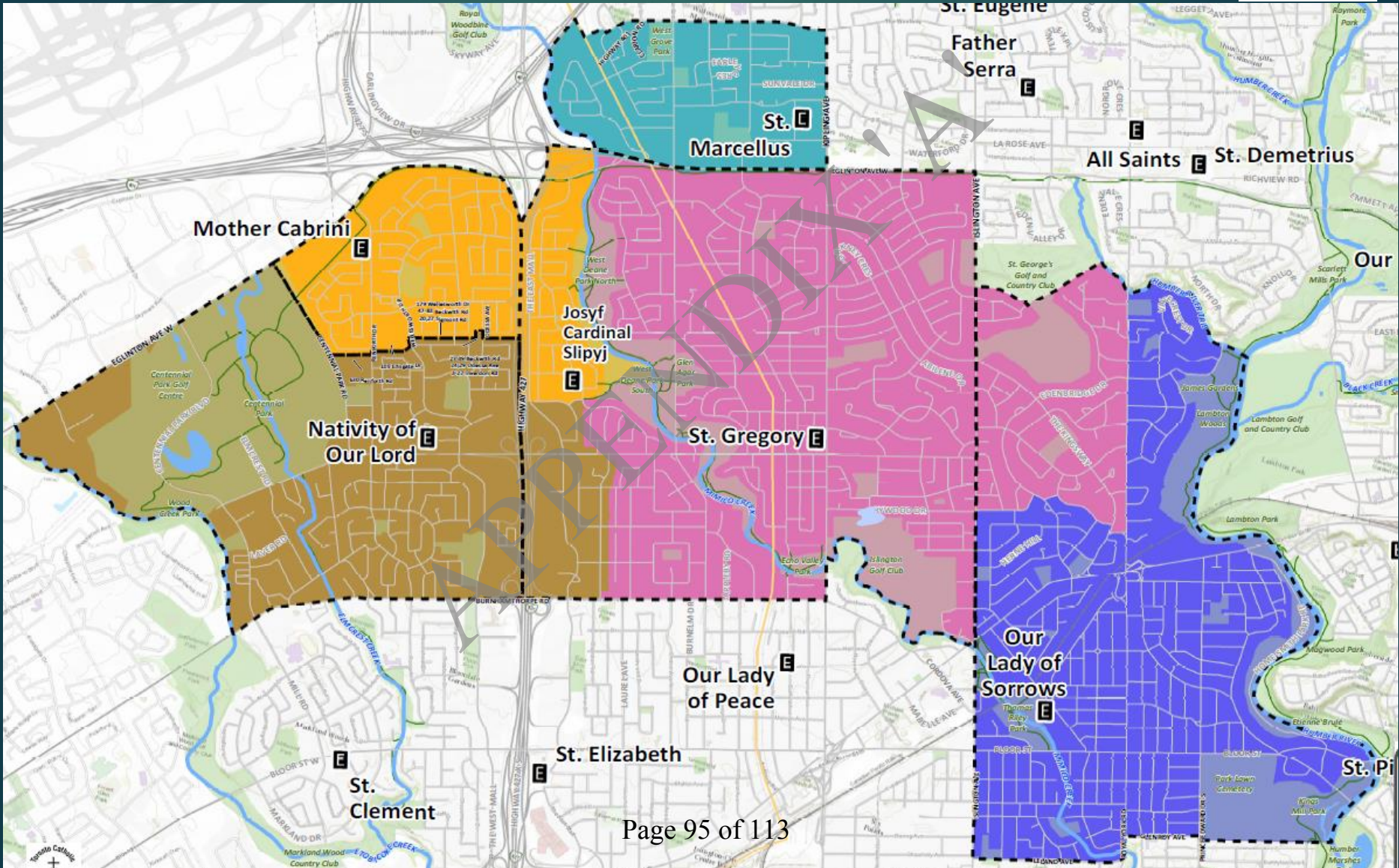
NATIVITY OF OUR LORD	OTG	2016	2020	2024	2028
Status Quo: Pupil Count	541	433	431	425	425
Status Quo: Rate of Utilization (%)		80%	80%	79%	79%
After Boundary Change: Pupil Count			551	635	673
After Boundary Change: Rate of Utilization (%)			102%	117%	124%

MOTHER CABRINI	OTG	2016	2020	2024	2028
Status Quo: Pupil Count	219	178	202	223	224
Status Quo: Rate of Utilization (%)		81%	92%	102%	102%
After Boundary Change: Pupil Count			220	259	269
After Boundary Change: Rate of Utilization (%)			101%	118%	123%

OUR LADY OF SORROWS	OTG	2016	2020	2024	2028
Status Quo: Pupil Count	568	783	788	731	741
Status Quo: Rate of Utilization (%)		138%	139%	129%	131%
After Boundary Change: Pupil Count			758	683	681
After Boundary Change: Rate of Utilization (%)			133%	120%	120%

ST MARCELLUS	OTG	2016	2020	2024	2028
Status Quo: Pupil Count	407	414	430	428	426
Status Quo: Rate of Utilization (%)		102%	106%	105%	105%
After Boundary Change: Pupil Count			430	428	426
After Boundary Change: Rate of Utilization (%)			106%	105%	105%

Committee Discussion - Scenario 4





ST GREGORY	OTG	2016	2020	2024	2028
Status Quo: Pupil Count	580	700	796	880	894
Status Quo: Rate of Utilization (%)		121%	137%	152%	154%
After Boundary Change: Pupil Count			711	728	718
After Boundary Change: Rate of Utilization (%)			123%	125%	124%

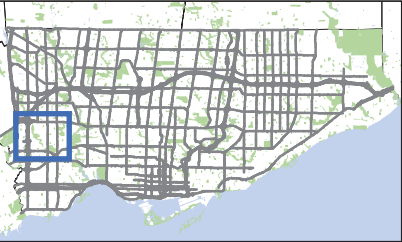
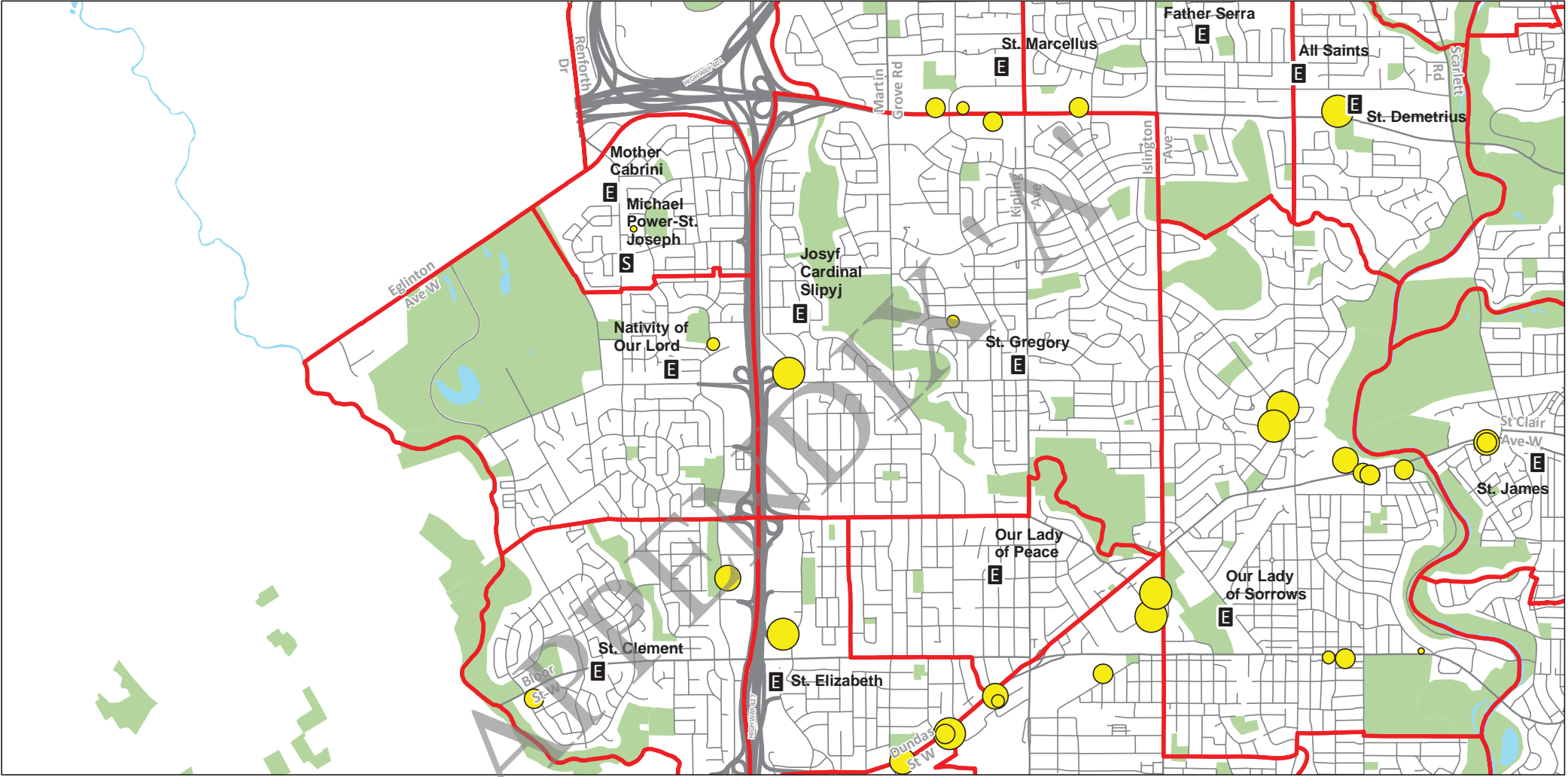
NATIVITY OF OUR LORD	OTG	2016	2020	2024	2028
Status Quo: Pupil Count	541	433	431	425	425
Status Quo: Rate of Utilization (%)		80%	80%	79%	79%
After Boundary Change: Pupil Count			528	590	617
After Boundary Change: Rate of Utilization (%)			98%	109%	114%

MOTHER CABRINI	OTG	2016	2020	2024	2028
Status Quo: Pupil Count	219	178	202	223	224
Status Quo: Rate of Utilization (%)		81%	92%	102%	102%
After Boundary Change: Pupil Count			220	259	269
After Boundary Change: Rate of Utilization (%)			101%	118%	123%

OUR LADY OF SORROWS	OTG	2016	2020	2024	2028
Status Quo: Pupil Count	568	783	788	731	741
Status Quo: Rate of Utilization (%)		138%	139%	129%	131%
After Boundary Change: Pupil Count			758	683	681
After Boundary Change: Rate of Utilization (%)			133%	120%	120%

ST MARCELLUS	OTG	2016	2020	2024	2028
Status Quo: Pupil Count	407	414	430	428	426
Status Quo: Rate of Utilization (%)		102%	106%	105%	105%
After Boundary Change: Pupil Count	Page 96 of 113		430	428	426
After Boundary Change: Rate of Utilization (%)			106%	105%	105%

TCDSB Elementary Schools including development - Etobicoke



E

TCDSB Elementary Schools

S

TCDSB Secondary Schools

TCDSB Fixed Attendance Boundaries

Proposed Development Units (To be Built between 2017-2030) - # of Units

- 1-50
- 51 - 100
- 101 - 300
- 301 - 500
- 501 - 2000

0

1

2 Km

N

Development Summary

St Gregory

Plan Number	Address	Total Units	Total Student Yield	Year																
				Phasing and Yield	2016	2017	2018	2019	2020	2021	2022	2023	2024	2025	2026	2027	2028	2029	2030	
11 248053 WET 03 OZ	600-620 THE EAST MALL	930	59.3	Unit Phasing	-	-	232	232	232	234	-	-	-	-	-	-	-	-	-	
				Student Yield	-	-	14.8	29.6	44.4	59.3	59.3	59.3	59.3	59.3	59.3	59.3	59.3	59.3	59.3	59.3
12 296424 WET 03 SA	41-53 WARRENDER AVENUE	259	19.4	Unit Phasing	-	-	86	86	87	-	-	-	-	-	-	-	-	-	-	
				Student Yield	-	-	6.4	12.9	19.4	19.4	19.4	19.4	19.4	19.4	19.4	19.4	19.4	19.4	19.4	
15 177458 WET 03 OZ	19 GLEN AGAR DRIVE	116	5	Unit Phasing	-	-	-	-	29	29	29	29	-	-	-	-	-	-	-	
				Student Yield	-	-	-	-	1	2	3	5	5	5	5	5	5	5	5	5
Total		1305	83.7	Units	0	0	318	318	348	263	29	29	0	0	0	0	0	0	0	
				Student Yield	0	0	21.2	42.5	64.8	80.7	81.7	83.7	83.7	83.7	83.7	83.7	83.7	83.7	83.7	83.7

Development Summary

Nativity of Our Lord

Plan Number	Address	Total Units	Total Student Yield	Year																
				Phasing and Yield	2016	2017	2018	2019	2020	2021	2022	2023	2024	2025	2026	2027	2028	2029	2030	
12 247275 WET 03 SA	2 HOLIDAY DRIVE	196	26	Unit Phasing	98	98	-	-	-	-	-	-	-	-	-	-	-	-	-	
				Student Yield	18.4	26	26	26	26	26	26	26	26	26	26	26	26	26	26	26
16 269174 WET 03 SA	70 Dixfield	88	9	Unit Phasing	-	-	-	-	-	22	22	22	22	-	-	-	-	-	-	
				Student Yield	-	-	-	-	-	2	5	7	9	9	9	9	9	9	9	9
Total		196	35	Units	98	98	0	0	0	0	0	0	0	0	0	0	0	0	0	
				Student Yield	0	26	26	26	26	26	28	31	33	35	35	35	35	35	35	35

Development Summary

Mother Cabrini

Plan Number	Address	Total Units	Total Student Yield	Year																
				Phasing and Yield	2016	2017	2018	2019	2020	2021	2022	2023	2024	2025	2026	2027	2028	2029	2030	
12 268621 WET 03 OZ	735 RENFORTH DRIVE	38	12.7	Unit Phasing	12	12	14	-	-	-	-	-	-	-	-	-	-	-	-	
				Student Yield	4	8	12.7	12.7	12.7	12.7	12.7	12.7	12.7	12.7	12.7	12.7	12.7	12.7	12.7	
Total		38	12.7	Units	12	12	14	0	0	0	0	0	0	0	0	0	0	0	0	
				Student Yield	4	8	12.7	12.7	12.7	12.7	12.7	12.7	12.7	12.7	12.7	12.7	12.7	12.7	12.7	

Development Summary
St Marcellus

Plan Number	Address	Total Units	Total Student Yield	Year																
				Phasing and Yield	2016	2017	2018	2019	2020	2021	2022	2023	2024	2025	2026	2027	2028	2029	2030	
09 198044 WET 04 OZ	63 CALLOWHILL DRIVE	21	4.2	Unit Phasing	6	6	9	-	-	-	-	-	-	-	-	-	-	-	-	
				Student Yield	1.1	2.3	4.2	4.2	4.2	4.2	4.2	4.2	4.2	4.2	4.2	4.2	4.2	4.2	4.2	4.2
12 242978 WET 04 SA	4800 EGLINTON AVENUE WEST	42	7.9	Unit Phasing	42	-	-	-	-	-	-	-	-	-	-	-	-	-	-	
				Student Yield	7.9	7.9	7.9	7.9	7.9	7.9	7.9	7.9	7.9	7.9	7.9	7.9	7.9	7.9	7.9	7.9
14 139493 WET 04 OZ	4780 EGLINTON AVENUE WEST	89	17	Unit Phasing	29	29	31	-	-	-	-	-	-	-	-	-	-	-	-	
				Student Yield	5.5	10.9	17	17	17	17	17	17	17	17	17	17	17	17	17	17
Total		152	29.1	Units	77	35	40	0	0	0	0	0	0	0	0	0	0	0	0	
				Student Yield	14.5	21.1	29.1	29.1	29.1	29.1	29.1	29.1	29.1	29.1	29.1	29.1	29.1	29.1	29.1	29.1

Development Summary
Our Lady of Sorrows

Plan Number	Address	Total Units	Total Student Yield	Year																
				Phasing and Yield	2016	2017	2018	2019	2020	2021	2022	2023	2024	2025	2026	2027	2028	2029	2030	
07 105069 WET 05 OZ	4187 DUNDAS ST W & 567,569,571 PRINCE EDWARD DR	114	7.5	Unit Phasing	28	28	28	30	-	-	-	-	-	-	-	-	-	-	-	
				Student Yield	1.8	3.7	5.5	7.5	7.5	7.5	7.5	7.5	7.5	7.5	7.5	7.5	7.5	7.5	7.5	7.5
13 185427 WET 05 OZ	2800 BLOOR ST W	37	3	Unit Phasing	-	12	12	13	-	-	-	-	-	-	-	-	-	-	-	
				Student Yield	-	1	2	3	3	3	3	3	3	3	3	3	3	3	3	3
12 111249 WET 04 OZ	259 & 270 THE KINGSWAY, 1144 ROYAL YORK ROAD	604	30.3	Unit Phasing	-	-	200	200	204	-	-	-	-	-	-	-	-	-	-	
				Student Yield	-	-	10	20	30.3	30.3	30.3	30.3	30.3	30.3	30.3	30.3	30.3	30.3	30.3	30.3
13 164210 WET 04 OZ	289 THE KINGSWAY	606	28.6	Unit Phasing	-	-	151	151	151	153	-	-	-	-	-	-	-	-	-	
				Student Yield	-	-	-	-	-	2.3	4.6	7.1	8.8	10.6	12.3	14.2	17.8	21.4	28.6	-
15 199682 WET 05 SA	2955-2961 BLOOR STREET WEST	86	4	Unit Phasing	-	-	-	-	28	28	30	-	-	-	-	-	-	-	-	
				Student Yield	-	-	-	-	1.3	2.6	4	4	4	4	4	4	4	4	4	4
14 183631 WET 04 OZ	4208, 4210 & 4212 DUNDAS STREET WEST	389	23.5	Unit Phasing	-	-	-	-	-	129	129	131	-	-	-	-	-	-	-	
				Student Yield	-	-	-	-	-	7.8	15.6	23.5	23.5	23.5	23.5	23.5	23.5	23.5	23.5	23.5
16 110541 WET 05 OZ	4125, 4127-4129 & 4133 DUNDAS STREET WEST	105	5.9	Unit Phasing	-	-	-	-	-	35	35	35	-	-	-	-	-	-	-	
				Student Yield	-	-	-	-	-	2	3.9	5.9	5.9	5.9	5.9	5.9	5.9	5.9	5.9	5.9
Total		1941	102.8	Units	28	28	28	30	0	164	164	166	0	0	0	0	0	0	0	
				Student Yield	1.8	3.7	5.5	7.5	7.5	17.3	27	36.9	36.9	36.9	36.9	36.9	36.9	36.9	36.9	36.9

Collisions by Year Class of Collision

Year of Collision	Class of Collision			Total
	Fatal	Personal Injury	Property Damage	
2016	0	1	10	11
2015	0	5	18	23
2014	0	5	6	11
2013	0	6	12	18
2012	0	9	12	21
Total	0	26	58	84

Collision by CRC Unit Class of Collision

CRC Unit of Collision	Class of Collision			Total
	Fatal	Personal Injury	Property Damage	
CrcNorth	0	3	40	43
AccidRptgCen	0	12	11	23
C	0	1	3	4
TSV	0	3	0	3
A	0	3	0	3
Uncoded	0	2	0	2
E	0	1	1	2
D	0	1	1	2
CrcEast	0	0	1	1
B	0	0	1	1
Total	0	26	58	84

Road Surface Condition by Class of Collision

Road Surface Condition	Class of Collision			Total
	Fatal	Personal Injury	Property Damage	
Dry	0	23	41	64
Wet	0	2	13	15
Slush	0	0	1	1
Packed Snow	0	0	1	1
Other	0	1	0	1
Loose Snow	0	0	1	1
Ice	0	0	1	1
Uncoded	0	0	0	0
Spilled liquid	0	0	0	0
Mud	0	0	0	0
Loose Sand or Gravel	0	0	0	0
Blank	0	0	0	0
Total	0	26	58	84

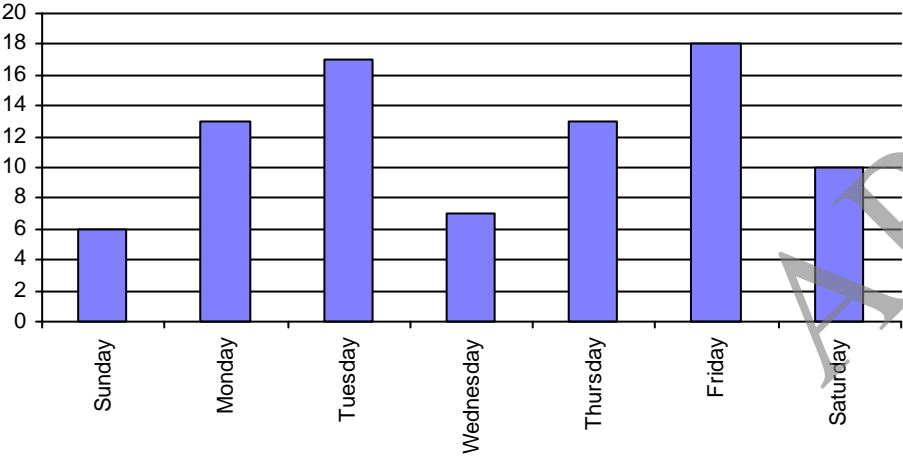
Initial Impact by Class of Collision

Initial Impact Type	Class of Collision			Total
	Fatal	Personal Injury	Property Damage	
Rear End	0	7	25	32
Turning Movement	0	6	19	25
Angle	0	3	5	8
Sideswipe	0	1	6	7
Pedestrian Collision	0	6	0	6
Cyclist Collision	0	2	1	3
SMV Unattended Vehicle	0	1	1	2
SMV Other	0	0	1	1
Uncoded	0	0	0	0
Other	0	0	0	0
Approaching	0	0	0	0
Total	0	26	58	84

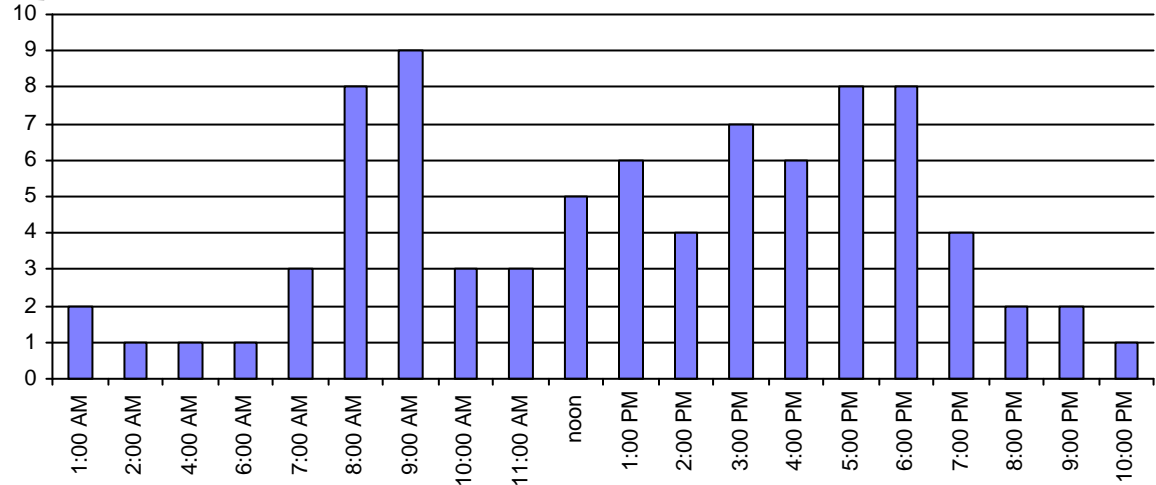
Month of Collision by Class of Collision

Month of Collision	Class of Collision			Total
	Fatal	Personal Injury	Property Damage	
January	0	1	4	5
February	0	1	7	8
March	0	2	2	4
April	0	3	8	11
May	0	4	4	8
June	0	2	5	7
July	0	0	4	4
August	0	3	6	9
September	0	3	4	7
October	0	3	6	9
November	0	3	4	7
December	0	1	4	5
Total	0	26	58	84

Collisions By Day of The Week



Collisions by Hour



Initial Impact by Initial Direction of Driver

Initial Impact Type	Initial Direction of Driver					Total
	Northbound	Southbound	Eastbound	Westbound	None Given	
Rear End	13	16	20	18	0	67
Turning Movement	11	11	16	11	0	49
Angle	2	5	6	3	0	16
Sideswipe	2	2	2	8	0	14
Pedestrian Collision	3	2	0	1	0	6
Cyclist Collision	0	0	2	1	0	3
SMV Unattended Vehicle	0	0	0	1	0	1
SMV Other	0	0	1	0	0	1
Other	0	0	0	0	0	0
Blank	0	0	0	0	0	0
Approaching	0	0	0	0	0	0
Total	31	36	47	43	0	157

Traffic Control Device by Class of Collision

Traffic Control Device	Class of Collision			Total
	Fatal	Personal Injury	Property Damage	
Traffic Signal	0	23	46	69
No Control	0	3	12	15
Yield Sign	0	0	0	0
Uncoded	0	0	0	0
Traffic Gate	0	0	0	0
Traffic Controller	0	0	0	0
Streetcar (Stop for)	0	0	0	0
Stop Sign	0	0	0	0
School Guard	0	0	0	0
School Bus	0	0	0	0
PXO / No Ped	0	0	0	0
Police Control	0	0	0	0
Pedestrian Crossover	0	0	0	0
Blank	0	0	0	0
Total	0	26	58	84

Category of Person By Severity of Injury

Category of Person	Severity of Injury					Total
	None	Minimal	Minor	Major	Fatal	
Animal	0	0	0	0	0	0
Blank; N/A	0	0	0	0	0	0
Company	0	0	0	0	0	0
Cyclist	1	1	0	1	0	3
Cyclist - Not Hit	0	0	0	0	0	0
Cyclist Passenger	0	0	0	0	0	0
Driver	137	4	13	0	0	154
Driver - Not Hit	0	0	0	0	0	0
In-Line Skater	0	0	0	0	0	0
Moped Driver	0	0	0	0	0	0
Moped Passenger	0	0	0	0	0	0
Motorcycle Driver	0	0	0	0	0	0
Motorcycle Passenger	0	0	0	0	0	0
Other	1	0	0	0	0	1
Other Property Owner	0	0	0	0	0	0
Passenger	28	7	10	0	0	45
Pedestrian	0	0	5	1	0	6
Pedestrian - Not Hit	0	0	0	0	0	0
Runaway - No Driver	0	0	0	0	0	0
Trailer Owner	0	0	0	0	0	0
Truck Driver	3	0	0	0	0	3
Unknown - FTR	0	0	0	0	0	0
Vehicle Owner	0	0	0	0	0	0
Victim	0	0	0	0	0	0
Wheelchair	0	0	0	0	0	0
Witness	0	0	0	0	0	0
Total	170	12	28	2	0	212

Category of Person Involved By Age Group

Category of Person	Age Group										Total
	0 - 4 yrs	5-14 yrs	15-19 yrs	20-24 yrs	25-34 yrs	35-44 yrs	45-54 yrs	55-64 yrs	65+	No Age	
Driver	0	1	4	13	19	26	31	20	29	11	154
Passenger	5	7	1	0	2	4	5	2	4	15	45
Other	0	0	0	0	1	0	0	0	0	12	13
Pedestrian	0	0	1	0	0	1	1	0	3	0	6
Truck Driver	0	0	0	0	0	0	1	1	1	0	3
Cyclist	0	2	0	0	0	0	0	0	1	0	3
Pedestrian - Not Hit	0	0	0	0	0	0	0	0	0	0	0
Motorcycle Driver	0	0	0	0	0	0	0	0	0	0	0
Moped Driver	0	0	0	0	0	0	0	0	0	0	0
Driver - Not Hit	0	0	0	0	0	0	0	0	0	0	0
Cyclist - Not Hit	0	0	0	0	0	0	0	0	0	0	0
Total	5	10	6	13	22	31	38	23	38	38	224

Manoeuvre by Initial Direction of Driver

Manoeuvre	Initial Direction of Driver					Total
	Northbound	Southbound	Eastbound	Westbound	None Given	
Going Ahead	10	15	27	16	0	68
Stopped	7	11	8	5	0	31
Turning Left	6	6	5	6	0	23
Slowing or Stopping	3	2	2	8	0	15
Turning Right	3	0	3	2	0	8
Changing Lanes	1	0	0	4	0	5
Reversing	1	1	1	0	0	3
Making "U" Turn	0	1	0	1	0	2
Unknown	0	0	1	0	0	1
Merging	0	0	0	1	0	1
Pulling Away from Shoulder or Disabled	0	0	0	0	0	0
Other	0	0	0	0	0	0
Blank	0	0	0	0	0	0
Parked	0	0	0	0	0	0
Pulling Onto Shoulder or towar	0	0	0	0	0	0
Stopped or Parked	0	0	0	0	0	0
Overtaking	0	0	0	0	0	0
Total	31	36	47	43	0	157

Top 10 Charges Laid by Class of Collision

Charge	Class of Collision			Total
	Fatal	Personal Injury	Property Damage	
Careless Driving HTA 111	0	7	2	9
Fail to Yield To Pedestrian	0	3	0	3
Turn or Change Lane Not In Safety	0	0	2	2
Red Light - Fail to Stop	0	0	2	2
Driving While Under Suspension	0	0	1	1
Drive M/V, No Currently Val. Permit	0	1	0	1
Class G1 licence holder - unaccompa	0	0	1	1
Class G1 licence holder - drive at	0	0	1	1
Change Lane - Not in Safety	0	1	0	1
Total	0	12	9	21

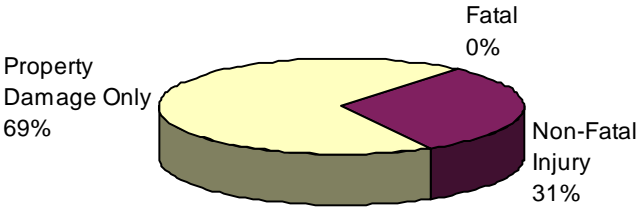
Apparent Driver Condition by Class of Collision

Driver Condition	Class of Collision			Total
	Fatal	Personal Injury	Property Damage	
Normal	0	32	96	128
Unknown	0	5	10	15
Inattentive	0	7	6	13
Ability Impaired, Alcohol Over .80	0	0	1	1
Uncoded	0	0	0	0
Other	0	0	0	0
Medical or Physical Disability	0	0	0	0
Had Been Drinking	0	0	0	0
Fatigue	0	0	0	0
Blank	0	0	0	0
Ability Impaired, Drugs	0	0	0	0
Ability Impaired, Alcohol	0	0	0	0
Total	0	44	113	157

Apparent Driver Action by Class of Collision

Driver Action	Class of Collision			Total
	Fatal	Personal Injury	Property Damage	
Driving Properly	0	18	54	72
Following too Close	0	6	19	25
Failed to Yield Right of Way	0	8	13	21
Other	0	1	10	11
Disobeyed Traffic Control	0	5	5	10
Improper Turn	0	3	5	8
Improper Lane Change	0	2	4	6
Lost control	0	0	2	2
Speed too Fast For Condition	0	1	0	1
Exceeding Speed Limit	0	0	1	1
Wrong Way on One Way Road	0	0	0	0
Uncoded	0	0	0	0
Speed too Slow	0	0	0	0
Improper Passing	0	0	0	0
Blank	0	0	0	0
Total	0	44	113	157

Collisions By Classification



Collisions by Year Class of Collision

Year of Collision	Class of Collision			Total
	Fatal	Personal Injury	Property Damage	
2016	0	0	10	10
2015	0	2	4	6
2014	0	1	9	10
2013	0	1	8	9
2012	0	3	4	7
Total	0	7	35	42

Collision by CRC Unit Class of Collision

CRC Unit of Collision	Class of Collision			Total
	Fatal	Personal Injury	Property Damage	
CrcNorth	0	1	27	28
AccidRptgCen	0	2	2	4
Uncoded	0	2	1	3
D	0	1	2	3
A	0	1	1	2
JA	0	0	1	1
CrcWest	0	0	1	1
Total	0	7	35	42

Road Surface Condition by Class of Collision

Road Surface Condition	Class of Collision			Total
	Fatal	Personal Injury	Property Damage	
Dry	0	6	26	32
Wet	0	1	6	7
Ice	0	0	2	2
Packed Snow	0	0	1	1
Uncoded	0	0	0	0
Spilled liquid	0	0	0	0
Slush	0	0	0	0
Other	0	0	0	0
Mud	0	0	0	0
Loose Snow	0	0	0	0
Loose Sand or Gravel	0	0	0	0
Blank	0	0	0	0
Total	0	7	35	42

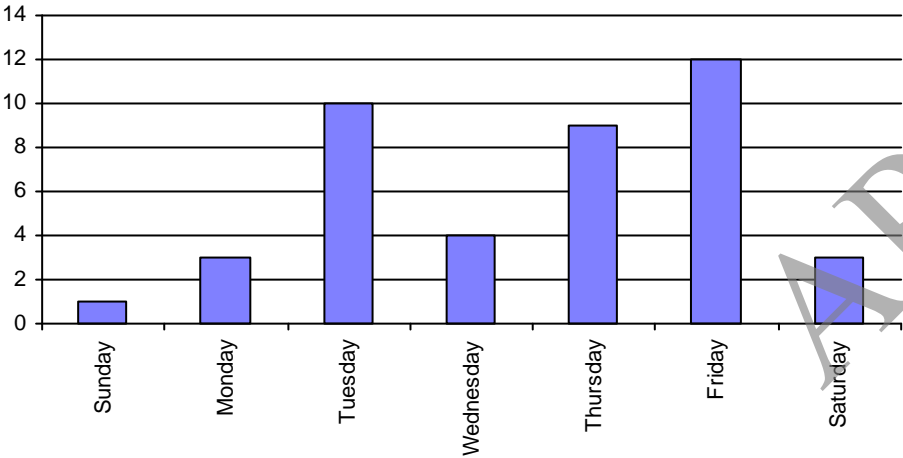
Initial Impact by Class of Collision

Initial Impact Type	Class of Collision			Total
	Fatal	Personal Injury	Property Damage	
Rear End	0	2	16	18
Angle	0	2	7	9
Turning Movement	0	0	6	6
Sideswipe	0	0	4	4
Other	0	1	1	2
Pedestrian Collision	0	1	0	1
Cyclist Collision	0	1	0	1
Approaching	0	0	1	1
Uncoded	0	0	0	0
SMV Unattended Vehicle	0	0	0	0
SMV Other	0	0	0	0
Total	0	7	35	42

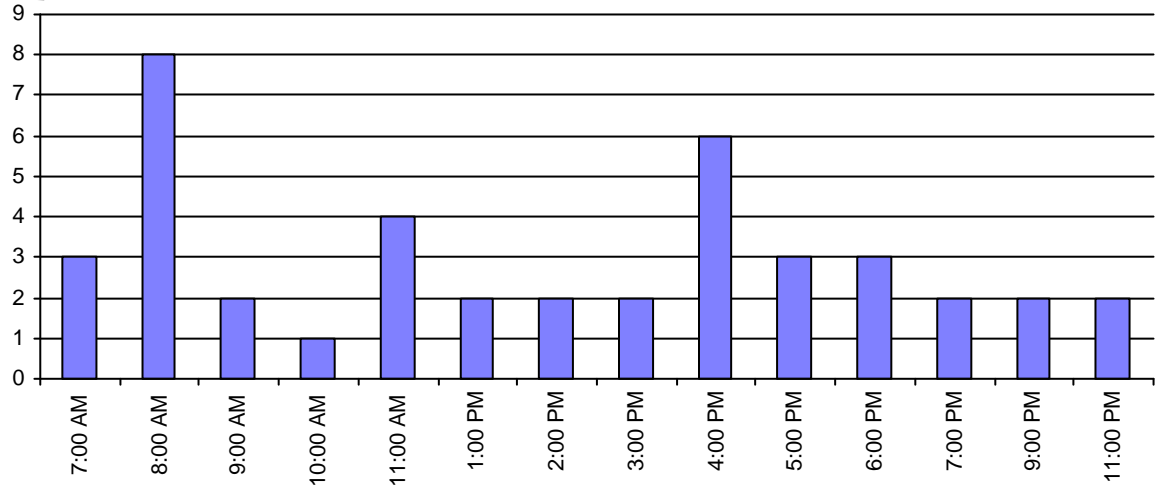
Month of Collision by Class of Collision

Month of Collision	Class of Collision			Total
	Fatal	Personal Injury	Property Damage	
January	0	0	7	7
February	0	0	4	4
March	0	0	3	3
April	0	0	5	5
May	0	0	3	3
June	0	5	0	5
July	0	0	2	2
August	0	0	2	2
September	0	0	2	2
October	0	0	3	3
November	0	1	1	2
December	0	1	3	4
Total	0	7	35	42

Collisions By Day of The Week



Collisions by Hour



Initial Impact by Initial Direction of Driver

Initial Impact Type	Initial Direction of Driver					Total
	Northbound	Southbound	Eastbound	Westbound	None Given	
Rear End	9	7	9	6	2	33
Angle	5	4	5	1	1	16
Turning Movement	4	3	5	1	0	13
Sideswipe	3	6	0	0	0	9
Other	1	1	0	1	0	3
Approaching	1	1	0	0	0	2
Pedestrian Collision	0	0	1	0	0	1
Cyclist Collision	0	1	0	0	0	1
SMV Unattended Vehicle	0	0	0	0	0	0
SMV Other	0	0	0	0	0	0
Blank	0	0	0	0	0	0
Total	23	23	20	9	3	78

Traffic Control Device by Class of Collision

Traffic Control Device	Class of Collision			Total
	Fatal	Personal Injury	Property Damage	
Traffic Signal	0	7	21	28
No Control	0	0	13	13
Stop Sign	0	0	1	1
Yield Sign	0	0	0	0
Uncoded	0	0	0	0
Traffic Gate	0	0	0	0
Traffic Controller	0	0	0	0
Streetcar (Stop for)	0	0	0	0
School Guard	0	0	0	0
School Bus	0	0	0	0
PXO / No Ped	0	0	0	0
Police Control	0	0	0	0
Pedestrian Crossover	0	0	0	0
Blank	0	0	0	0
Total	0	7	35	42

Category of Person By Severity of Injury

Category of Person	Severity of Injury					Total
	None	Minimal	Minor	Major	Fatal	
Animal	0	0	0	0	0	0
Blank; N/A	0	0	0	0	0	0
Company	0	0	0	0	0	0
Cyclist	0	1	0	0	0	1
Cyclist - Not Hit	0	0	0	0	0	0
Cyclist Passenger	0	0	0	0	0	0
Driver	74	1	2	0	0	77
Driver - Not Hit	1	0	0	0	0	1
In-Line Skater	0	0	0	0	0	0
Moped Driver	0	0	0	0	0	0
Moped Passenger	0	0	0	0	0	0
Motorcycle Driver	0	0	0	0	0	0
Motorcycle Passenger	0	0	0	0	0	0
Other	0	0	0	0	0	0
Other Property Owner	0	0	0	0	0	0
Passenger	18	0	4	0	0	22
Pedestrian	0	1	0	0	0	1
Pedestrian - Not Hit	0	0	0	0	0	0
Runaway - No Driver	0	0	0	0	0	0
Trailer Owner	0	0	0	0	0	0
Truck Driver	1	0	0	0	0	1
Unknown - FTR	0	0	0	0	0	0
Vehicle Owner	2	0	0	0	0	2
Victim	0	0	0	0	0	0
Wheelchair	0	0	0	0	0	0
Witness	0	0	0	0	0	0
Total	96	3	6	0	0	105

Category of Person Involved By Age Group

Category of Person	Age Group										Total
	0 - 4 yrs	5-14 yrs	15-19 yrs	20-24 yrs	25-34 yrs	35-44 yrs	45-54 yrs	55-64 yrs	65+	No Age	
Driver	0	0	1	2	15	10	16	14	16	3	77
Passenger	2	3	0	1	3	0	0	1	1	11	22
Other	0	0	0	0	0	1	0	0	0	4	5
Truck Driver	0	0	0	0	1	0	0	0	0	0	1
Pedestrian	0	0	1	0	0	0	0	0	0	0	1
Driver - Not Hit	0	0	0	0	0	0	0	0	0	1	1
Cyclist	0	0	0	1	0	0	0	0	0	0	1
Pedestrian - Not Hit	0	0	0	0	0	0	0	0	0	0	0
Motorcycle Driver	0	0	0	0	0	0	0	0	0	0	0
Moped Driver	0	0	0	0	0	0	0	0	0	0	0
Cyclist - Not Hit	0	0	0	0	0	0	0	0	0	0	0
Total	2	3	2	4	19	11	16	15	17	19	108

Manoeuvre by Initial Direction of Driver

Manoeuvre	Initial Direction of Driver					Total
	Northbound	Southbound	Eastbound	Westbound	None Given	
Going Ahead	9	15	10	3	1	38
Stopped	4	4	5	5	0	18
Turning Left	6	0	4	0	0	10
Slowing or Stopping	3	1	1	1	0	6
Changing Lanes	0	2	0	0	0	2
Unknown	0	0	0	0	2	2
Overtaking	0	1	0	0	0	1
Reversing	1	0	0	0	0	1
Disabled	0	0	0	0	0	0
Making "U" Turn	0	0	0	0	0	0
Merging	0	0	0	0	0	0
Other	0	0	0	0	0	0
Blank	0	0	0	0	0	0
Pulling Away from Shoulder or	0	0	0	0	0	0
Pulling Onto Shoulder or towar	0	0	0	0	0	0
Stopped or Parked	0	0	0	0	0	0
Turning Right	0	0	0	0	0	0
Parked	0	0	0	0	0	0
Total	23	23	20	9	3	78

Top 10 Charges Laid by Class of Collision

Charge	Class of Collision			Total
	Fatal	Personal Injury	Property Damage	
Turn or Change Lane Not In Safety	0	0	4	4
Red Light - Fail to Stop	0	1	1	2
Drive M/V - No Licence	0	1	1	2
Fail to Surrender Permit for M/V	0	1	0	1
Fail to Surr. Suspended Lic. Minist	0	0	1	1
Careless Driving HTA 111	0	1	0	1
Total	0	4	7	11

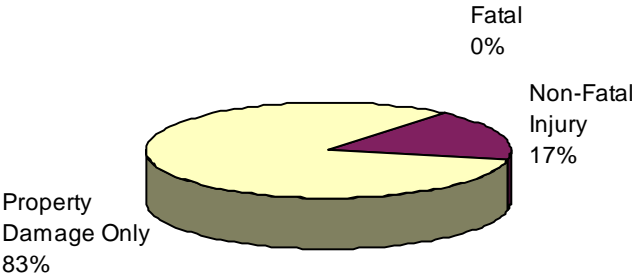
Apparent Driver Condition by Class of Collision

Driver Condition	Class of Collision			Total
	Fatal	Personal Injury	Property Damage	
Normal	0	11	48	59
Uncoded	0	0	14	14
Unknown	0	1	1	2
Inattentive	0	0	2	2
Medical or Physical Disability	0	1	0	1
Other	0	0	0	0
Had Been Drinking	0	0	0	0
Fatigue	0	0	0	0
Blank	0	0	0	0
Ability Impaired, Drugs	0	0	0	0
Ability Impaired, Alcohol Over .80	0	0	0	0
Ability Impaired, Alcohol	0	0	0	0
Total	0	13	65	78

Apparent Driver Action by Class of Collision

Driver Action	Class of Collision			Total
	Fatal	Personal Injury	Property Damage	
Driving Properly	0	8	29	37
Uncoded	0	0	12	12
Following too Close	0	1	7	8
Other	0	0	5	5
Failed to Yield Right of Way	0	0	5	5
Disobeyed Traffic Control	0	2	2	4
Improper Turn	0	1	2	3
Lost control	0	1	1	2
Speed too Fast For Condition	0	0	1	1
Improper Lane Change	0	0	1	1
Wrong Way on One Way Road	0	0	0	0
Speed too Slow	0	0	0	0
Improper Passing	0	0	0	0
Exceeding Speed Limit	0	0	0	0
Blank	0	0	0	0
Total	0	13	65	78

Collisions By Classification



**STUDENT ACHIEVEMENT AND WELL BEING
PENDING LIST AS OF MARCH 2, 2017**

#	Date Requested & Committee/Board	Report Due Date	Destination of Report Committee/Board	Subject	Delegated To
1	June-16 Student Achievement	Apr-17	Student Achievement	Report regarding the results of the data being tracked and monitored since September 2016, which informs us of the system and student impacts on those areas where trustees have approved cuts for 2016-2017.	Associate Director Academic Affairs
	Jan-17 Student Achievement			<p>This report to be included as an Appendix to the 2017 – 2018 budget reductions options and staff to include the following information for each reduction option:</p> <ul style="list-style-type: none"> - Risks to students, schools and the system (including risks to achievement, well-being, and learning opportunities); - Our proposed response(s) to identified risks 	Associate Director Academic Affairs
2	June-16 Student Achievement	Apr-17	Student Achievement	Report regarding a review of Educational Assistant efficiencies Boardwide in both elementary and secondary	Associate Director Academic Affairs
	Jan-17 Student Achievement			1) Report on the impact of EA and CYW reductions already made to include details (in public or private as appropriate) on the individual requests made for EAs	Associate Director Academic Affairs/CFO and Executive

#	Date Requested & Committee/Board	Report Due Date	Destination of Report Committee/Board	Subject	Delegated To
				and CYWs being made by school staff and parents and our system response to those requests 2) Staff to provide a dollar unit cost per special education student, and if possible, comparisons with other Boards	Superintendent, Business Services
3	June-16 Student Achievement	In advance of setting the Budget for future years	Student Achievement	Report regarding costs for materials and how they can be reduced by department in the future	Associate Director Academic Affairs
4	Oct-16 Student Achievement	Jun -17	Student Achievement	Staff to implement a survey for the parents and students involved in the Pilot Project for Jump Mathematics	Associate Director Academic Affairs