



REPORT TO

## STUDENT ACHIEVEMENT AND WELL BEING, CATHOLIC EDUCATION AND HUMAN RESOURCES COMMITTEE

### ENROLMENT STATUS REPORT

*“So, whether you eat or drink, or whatever you do, do all to the glory of God.” 1 Corinthians 10:31*

Created, Draft	First Tabling	Review
September 28, 2017	October 5, 2017	<a href="#">Click here to enter a date.</a>

John Volek, Acting Comptroller, Planning & Development Services  
 Joe Genova, Coordinator, Human Resources & ICT Support

### INFORMATION REPORT

**Vision:**

*At Toronto Catholic we transform the world through witness, faith, innovation and action.*

**Mission:**

*The Toronto Catholic District School Board is an inclusive learning community uniting home, parish and school and rooted in the love of Christ.*

*We educate students to grow in grace and knowledge to lead lives of faith, hope and charity.*

Rory McGuckin  
 Director of Education

D. Koenig  
 Associate Director  
 of Academic Affairs

A. Sangiorgio  
 Associate Director  
 of Planning and Facilities

T.B.D.  
 Executive Superintendent  
 of Business Services and  
 Chief Financial Officer



## A. EXECUTIVE SUMMARY

This report provides a side-by-side comparison of the preliminary Full-Time Equivalent (FTE) enrolment figures for October 5, 2017 with the Board approved projected enrolment for October 31, 2017. Based on the evidence presented within this report, staff have been able to annually project enrolment for the following school year to a very high degree of accuracy (+/- 0.5%).

*The cumulative staff time dedicated to developing this report was 30 hours.*

## B. PURPOSE

The purpose of this report is to provide the Board of Trustees with preliminary enrolment figures for the elementary and secondary panels based on actual Trillium enrolment data. Please refer to enrolment tables below:

## C. EVIDENCE/RESEARCH/ANALYSIS

### 1. Elementary Panel Enrolment (FTE)

	JK	SK	Gr1	Gr2	Gr3	Gr4	Gr5	Gr6	Gr7	Gr8	Total
Actual FTE	5,717	5,970	5,965	6,157	6,243	6,193	6,299	6,281	6,371	6,261	61,457
Proj. FTE	5,826	5,981	5,916	6,121	6,228	6,225	6,302	6,271	6,451	6,299	61,620
Diff.	-109	-11	49	36	15	32	-3	10	-80	-38	<b>-163</b> (-0.26%)

### 2. Secondary Panel Enrolment (FTE)

	Gr 9	Gr 10	Gr 11	Gr 12	Total
Actual FTE	6,595	6,816	7,305	8,976	29,691
Projected FTE	6,742	6,739	7,268	8,935	29,684
Difference	-147	77	37	41	<b>7</b> (0.02%)

### 3. Total Enrolment (FTE)

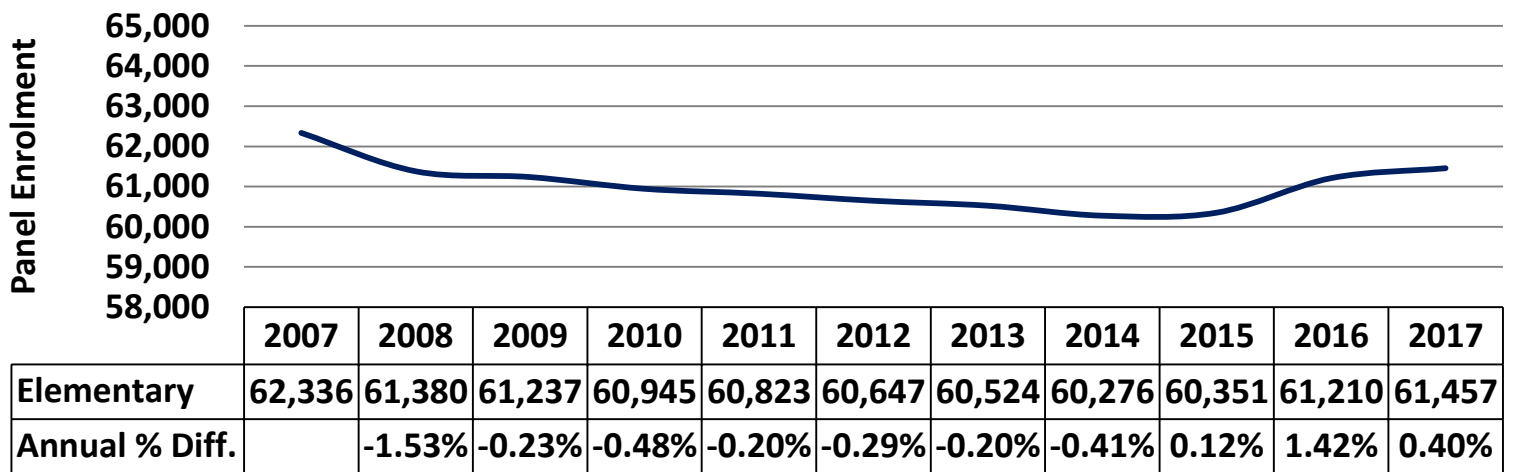
	Total	% Diff.
Actual FTE	91,148	-0.17%
Projected FTE	91,304	
Difference	<b>-156</b>	

### 4. Historic TCDSB Enrolment

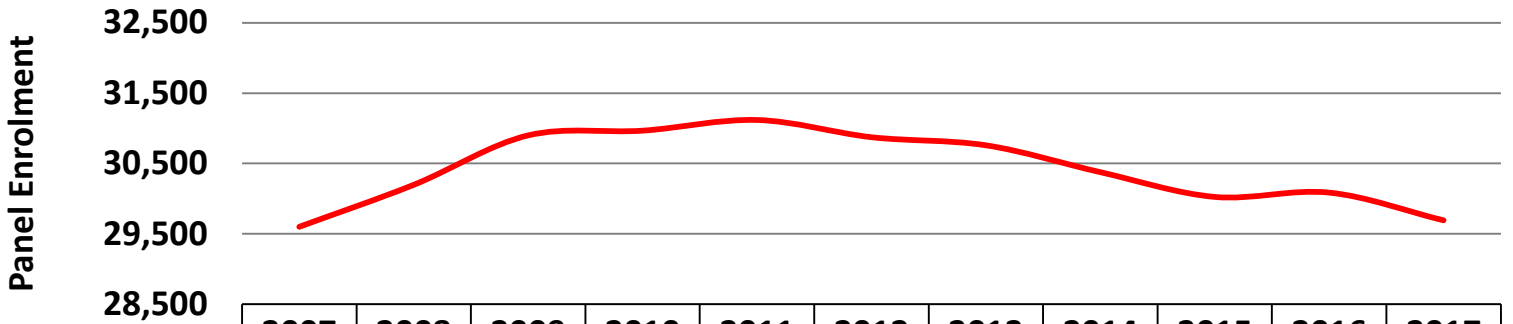
Elementary enrolment has been in general decline since 2006. A significant 1.42% increase in enrolment was observed in 2016, which can be partly attributed to the beginnings of millennial families. It is anticipated, however, that elementary enrolment will modestly grow over the coming years—largely supported by strong residential condominium development in the City.

As with elementary enrolment, secondary enrolment has been in general decline since 2011, with a small 0.20% increase in 2016. Secondary enrolment is projected to decline slightly over the next three (3) years before rebounding back towards a trend of modest but sustainable growth.

**TCDSB Historic Elementary Enrolment**



### TCDSB Historic Secondary Enrolment



	2007	2008	2009	2010	2011	2012	2013	2014	2015	2016	2017
Secondary	29,599	30,196	30,899	30,966	31,118	30,873	30,758	30,376	30,024	30,085	29,691
Annual % Diff.		2.02%	2.33%	0.22%	0.49%	-0.79%	-0.37%	-1.24%	-1.16%	0.20%	-1.31%

#### 5. Historical Projection Accuracy

Over the past 4 years planning staff have achieved a target projection margin of error of between +/- 0.5%.

Year	2014	2015	2016	2017 (Current)
Projected Elem. FTE Enrolment	60,487	60,021	60,955	61,620
Actual Elem. FTE Enrolment	60,276	60,351	61,210	61,457
<b>Elementary Difference</b>	<b>-211</b>	<b>330</b>	<b>255</b>	<b>-163</b>
<b>Elementary % Difference</b>	<b>-0.35%</b>	<b>0.55%</b>	<b>0.42%</b>	<b>-0.26%</b>
Projected Sec. FTE Enrolment	30,490	29,955	30,238	29,684
Actual Sec. FTE Enrolment	30,376	30,024	30,085	29,691
<b>Secondary Difference</b>	<b>-114</b>	<b>70</b>	<b>-153</b>	<b>7</b>
<b>Secondary % Difference</b>	<b>-0.38%</b>	<b>0.23%</b>	<b>-0.50%</b>	<b>0.02%</b>
Projected Total FTE Enrolment	90,978	89,975	91,193	91,304
Actual Total FTE Enrolment	90,652	90,375	91,295	91,148
<b>Total Difference</b>	<b>-326</b>	<b>400</b>	<b>102</b>	<b>-156</b>
<b>Total % Difference</b>	<b>-0.36%</b>	<b>0.44%</b>	<b>0.11%</b>	<b>-0.17%</b>

## **D. CONCLUDING STATEMENT**

This report is for the consideration of the Board.